

❧ *What's New at the* ❧

# *Grand Lake Area Historical Society*

*Our mission is to preserve, protect and promote the history of the Grand Lake area.*

## **Working Hard to Design a Marvelous Museum**

The Historical Society moved the Smith Eslick Cottage Court to the corner of Lake Avenue and Vine Street to prevent its demolition in 2009. As the oldest original condition “motor court” in the region, the Court had been on the GLAHS *Walking Tour* for decades, and we knew it was a humble but unique structure with hundreds of important history stories to tell to visitors and everyone. At first, all our efforts focused on placing the Cottage Court on the Colorado State Register of Historic Properties, protecting it temporarily until real restoration could begin, and trying to acquire a larger space for its site. We received tremendous help from History Colorado, the Grand Foundation, Grand County, National Trust for Historic Preservation, the Town of Grand Lake, and our many members and donors.



*Photo by Pat Raney, Rocky Mountain Rustic*

Still, it's been a struggle at times, so when the Smith Eslick Cottage Camp Planning Committee began working with preservation architect Dennis Humphries to develop a master plan for the museum site, many on the committee were no doubt hoping that he'd share the perfect recipe for designing the perfect museum site. It soon became clear that there isn't one! No easy recipe... like good food ideas handed down over generations, the most effective museum site has to be fashioned from its own unique historical ingredients and presented so the community will want to enjoy its every bit.

The “historical ingredients” part is coming together pretty well. We have wonderful story tellers in our community who will help bring delightful, often interactive, and educational exhibits to the site. There are so many terrific “stories” to tell that appeal to all sorts of visitors... how early and tenacious entrepreneurs in the mountain west found ways to make a living and build a community, how early automobile tourism led to the development of better roads and even modern highways, how inventions we take for granted like Thermos bottles, folding chairs and tables, and portable cook stoves were developed for the early automobile tourist. Visitors can learn about the importance of water, how our rivers and lovely Lake have been, and still are, essential to the growth of Grand Lake and the West. Or perhaps they'll just like to sit behind the steering wheel or peer at the engine of an antique automobile in the carport of a rustic, completely unique early motel. The firm of Traub Design Associates, Inc. is going help make these stories come alive in exhibits.

Much harder is designing a museum site that will be used by the entire community in all seasons in our mountain town. We have tentatively planned some possibilities, but we need your input before final master plans for the site are ready. We want to show you what we've been thinking would be best use for the museum site, and we will strongly encourage your feedback and better ideas! **Please plan to come to a very special Community Meeting at 7:00pm, Wednesday, June 11<sup>th</sup> at the Grand Lake Community House in Town Park.** We'll have music and snacks and fun, and of course it's free. We really do need you, and want you to see what's already planned, so please do come! The brief Annual Meeting, when the GLAHS shares all that we've been doing in the last year with its members, will follow the Smith Eslick Cottage Camp presentation.



Visit our web site:  
[www.grandlakehistory.org](http://www.grandlakehistory.org)

Send us your E-mail address so you can  
 receive our E-Blasts:  
[glhistory@rkymtnhi.com](mailto:glhistory@rkymtnhi.com)

Contact us:  
[glhistory@rkymtnhi.com](mailto:glhistory@rkymtnhi.com)  
 970-627-8324  
 P.O. Box 656  
 Grand Lake, CO 80447

**Kauffman House Museum**  
 407 Pitkin Street  
 Grand Lake

**Smith Eslick Cottage Camp**  
 729 Lake Avenue  
 Grand Lake

#### **GLAHS Board of Directors**

Jim Cervenka - President  
 Kathy Means - Vice President,  
 Collections Manager  
 Patti Stahl - Treasurer  
 Elin Capps - Secretary  
 Sharon King - Membership  
 Malene Mortenson - Gift Shop  
 Dave Sauer - Buildings  
 Paul Gilbert - Buildings  
 Deb Bondi - Finance  
 Lois Sauer - Special Events  
 Elmer Lanzi - Town Liaison  
 Melinda McKinney - Genealogy

#### **Cottage Camp Committee**

Elin Capps  
 Jim Cervenka  
 Judy Forman  
 Paul Harrington  
 Paul Gibert  
 Lynne Ludwig  
 Pat Raney  
 Jane Stotts

## **We're All Volunteers!**

The Grand Lake Area Historical Society is an entirely volunteer organization... no paid staff. That's not all that amazing, as everyone in a small town can tell you that many, many of the most important jobs would simply not get done were it not for loyal volunteers.

A great example is the Kauffman House Museum which is open daily 11:00am - 5:00pm all summer. It is a wonderful place, made even more wonderful by a group of volunteer Docents who greet visitors and offer tours of the House. Docents work one three hour shift each week. We try to have two Docents at the House at all times, so one can greet folks if the other is helping guests enjoy the museum. That means we need to have 28 Docents at the House each week. It's a fun job, but some of our folks are no longer able to participate, so we *need* to fill their positions.

We would welcome *your* joining the team. We'll provide materials and a brief training to anyone who enjoys meeting people from all over the world, and wouldn't mind learning a bit more history of our area. Give us a call or e-mail. We'd be most appreciative.

Thanks to those who are already on the team: Mary Jo Burton, Malene Mortenson, Bill Elliott, Dave Sauer, Brenda McGinnis, Pat Wishart, Romaine & George Wilcinski, Nancy Lavington, Joan Malouff, Jeff & Wanda Bush, Sharon King, Merrie Coolen, Rudy Perez, Deb Bondi, Frank Reardon, Muriel Johnson, Patti Stahl, Jim & Elin Capps, Kathy & Bob Means, and Kelly Little. Bravo!



Jim Cervenka

Your Board is entrusted with guiding the Society as we fulfill our mission. Our committees (some standing, some one-time) help carry out the steps for our successes. Both include educators, entrepreneurs, and techies. Board meetings are once a month, and I try really hard to keep them to less than 2 hours each. Committees meet as needed. Both the Board and committees can always use new ideas, additional skills, and fresh faces. Are you able to step up your commitment to the Society? I'd love to have you join in.

## School Days – a “Classy” History Experience

The engaging special exhibit in the Gallery of the Kauffman House Museum will surely speak to everyone who has ever been a student! It's all about the many schools that were in the Grand Lake area beginning in 1881 when the School District was organized, about remarkable events in those schools, and about the people who taught and learned in them. There'll be an array of vintage school desks and lots of other gear so you can “play school” just for fun. There'll be lots of fascinating history, hundreds of photographs and school stories to enjoy and remember. You'll be surprised at how much the modern school experience is different and yet so the same, how much you'll recognize... and how much you've never even imagined!

The Kauffman House Museum, off Pitkin Street overlooking the beach in Grand Lake, will open for the season on May 24<sup>th</sup>, 11:00am – 5:00pm daily. This new and very special exhibit is included in the admission to the entire museum, Adults \$5.00, Free to Children 12 and Younger and GLAHS Members.



Fred Maker with the School Bus Sled



1932 Teacher Patience Cairns and class at Grand Lake School, located where the Trinity Church manse is today.



Inside Sleepy Hollow School, 1925



Sleepy Hollow School, 1925  
Now under Granby Reservoir



The “New” Public School. 1936



## Coming Events - Making History

### **May 17th, 9:00AM Cleanup Day**

Come to help the Historical Society make the Kauffman House gardens and lawn ready for the Summer. Bring a rake, gloves, hat... or bring just yourself! Everything is easier with many hands.



### **May 24th through Labor Day, weekends in September**

**Kauffman House Museum opens for the season. Open daily 11:00AM-5:00PM**

### **June 11th, 7:00PM, Grand Lake Community House GLAHS Annual Meeting Presenting Master Plans for the Smith Eslick Cottage Camp**

There'll be music and yummy treats... all FREE!  
Come to learn what's planned. Make your voice heard.  
The Smith Eslick Cottage Camp will be special.  
Now's your chance to make it specially yours!



### **June 17th, 2:00PM - 4:00, Historic Rapids Lodge Lovely Victorian Tea**

Amazing food in a lovely room. Sit back and relax while the servants do the work. Bring your own Victorian hat or borrow one of ours, chat with new friends and old, and enjoy. Such fun!

All proceeds benefit the Smith Eslick Cottage Camp project. \$20. **To reserve**, call 970-627-8324 or the Rapids at 970-627-3707. Or contact us at [glhistory@rkymtnhi.com](mailto:glhistory@rkymtnhi.com).

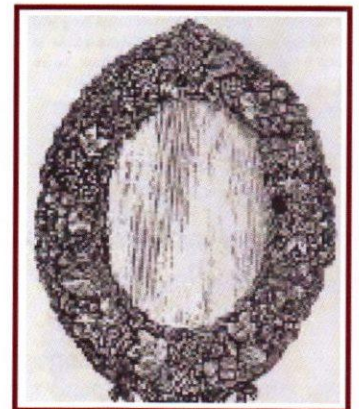
### **July 17th, 10:00AM - 12 GLAHS Modular Office Pinecone Art Workshop 610 Center Dr., south of the post office in Grand Lake**

Very Victorian, very interesting, and a very fun workshop with instructor Jane Kemp. We'll be taking petals of pinecones to decorate picture frames or small boxes or the like.

Come to use your hidden talents (who knew we could do this?) and come away with a beautiful item for your home.

Be ready to laugh, and bring a glue gun, if possible. \$10 covers all other materials.

Contact 970-627-8324 or [glhistory@rkymtnhi.com](mailto:glhistory@rkymtnhi.com) to sign up for the class, and for more details.





## Check the Web Site For Updates: [www.grandlakehistory.org](http://www.grandlakehistory.org)



**July 16th, 9:00AM - 5:00PM**

**Grand Lake and Kawuneeche Valley History**

A Rocky Mountain Field Seminar offered by the Rocky Mountain Nature Association, presented by Kathy Means with Elin Capps. For more information and to register, contact [fieldseminars@rmna.com](mailto:fieldseminars@rmna.com).

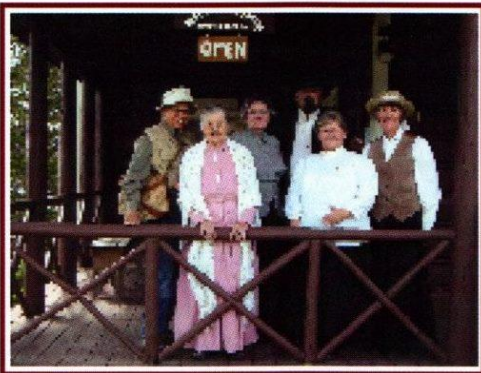
**August 1st, beginning at 5:30PM**

**Souper Stars for the Cottage Camp**

A lovely evening of delicious soups... the ones you don't have time to cook at home, adult beverages, music, a live auction, some raffle action, and fun! All at the lovely home of hosts Tom and Lynne Ludwig.

Don't miss this! Reserve today! Call 970-627-9644 or contact [glhistory@rkymtnhi.com](mailto:glhistory@rkymtnhi.com) for more information.

All proceeds benefit the Smith Eslick Cottage Camp project. And Thank You!



**August 2nd, 1:00 - 4:00PM**

**History Day at the Kaufman House Museum**

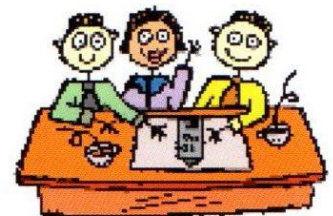
Come to visit with characters of the past and listen to some great stories while you enjoy the museum.

Special \$1.00 admission, all ages, all day 11:00- 5:00PM.

**August 5th, beginning at 6:00PM**

**Planning for Exhibits at the Kaufman House Museum**

We'll feed you! Bring your ideas for what you'd like to see on display at the Kaufman House Museum! We'll plan for the next three years, and we'll brainstorm what **you'd** like to see in the Gallery of the museum. This is a fun one, and extremely helpful and necessary. Give us a call if you'd like more information. 970-627-9644 or [glhistory@rkymtnhi.com](mailto:glhistory@rkymtnhi.com).



**And then, in September...**

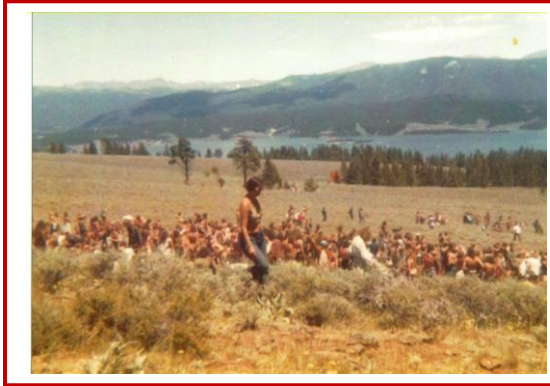
**Wild Game Culinary Event at the Community House September 26th & 27th**

**Kauffman House Museum open weekends only, 11:00-5, through September.**

## Document Collection Lends Perspective to 1972... What a Summer!

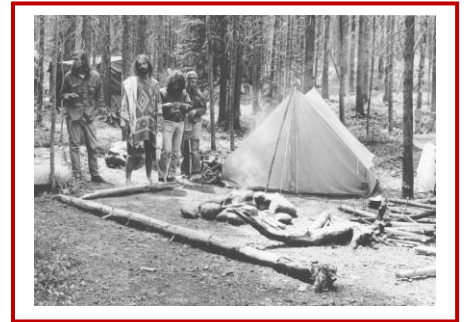
Like all time, 1972 had its ups and downs. It was a year of bell bottom pants and lava lamps, of gas for 55 cents a gallons, 98 cent ground beef, the Watergate scandal, Ford Pintos and new houses selling for \$27,000.

There are lots of surprising stories in the Grand Lake area's history, but none quite as odd as those of that



Summer of 1972 when the Rainbow Gathering, a Gathering for Peace, came together at Strawberry Lake, one mile south of Arapaho Bay. According to documents given to the Grand Lake Area Historical Society by Ray Grusing, County Sheriff at the time, the event was first organized by The Rainbow Family of Living Light and Universal Life Church, groups of counterculture young folks out of the Pacific Northwest, but it was well publicized and attracted folks from all areas of the country. The main festival was to be held on Table Mountain July 1- 4, but participants began arriving in June.

Local county and federal law enforcement had begun planning their response to the event in May, and the Grand County Sheriff's Department budgeted almost \$14,000 for equipment and personnel. The main plan was to dissuade and hinder folks from attending, as there were concerns that a gathering of the numbers expected for this event "could create a potential threat to the management and protection of National Forest land." Areas around Grand Lake were marked for law enforcement patrol, and others were closed to overnight camping except in designated campgrounds. Blockades and checkpoints were mounted on roads leading to Monarch Lake and elsewhere, and a staging area was set up near Granby airport, but participants often found back trails to the festival site.



By mid June, representatives of the organizers had met with state and local government officials, as well as community and local church groups to explain what they had been planning for five years. It was to be a gathering of shared spirits and love, loosely based on ancient Native American gatherings. Documents of the time indicate that the local citizens weren't at all happy about what they were hearing. The Colorado Bureau of Investigation issued a report in which they discussed a recent similar gathering in Idaho. The CBI report said, "Many drugs were present at the festival... beer and wine were circulated freely. The report concludes that that the gathering was not simply a picnic, but was indeed a rock festival... and that the absolute freedom concept of the Universal Life Church, and the desire to promote rock festivals leads to the admitted state of anarchy that both directly and indirectly attacks organized society."

A helicopter fly-over of the Strawberry Lake and meadows area in June showed that between 750 and 1200 people were gathered, with three major eating sites, and tents, lean-tos and tepees, and it was clear that the event was not going to disappear. Meanwhile, rumors were flying, the best perhaps being the one that said Joan Baez was coming to lift the blockades to Strawberry Lake. In reality, by late June there were serious concerns



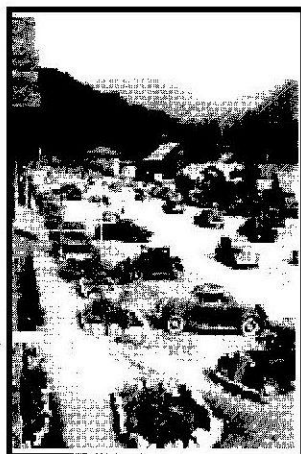
about sanitation, drinking water, food and medical care for the campers. Over time, private property surrounding the meadows was being damaged with so many people in one place, and drug use as well as unexpected guests like motor-cycle gangs made management difficult. Then, it was all over and people went home. What a Summer!



## More News from GLAHS



The Kauffman House Museum is a Blue Star Museum, offering free admission to active military personnel and their families. They need only show the museum Docents an active military ID.



Immediately in front of the Smith Eslick Cottage Court site on Vine Street in Grand Lake is a last remaining portion of the original Cairns Ditch, which delivered water for all sorts of uses to the Town of Grand Lake and neighboring properties. The Ditch is on town right-of-way, but GLAHS will be collaborating with the Town to nominate the Cairns Ditch to the National Register of Historic Places. The iconic Smith Eslick Cottage Court will also soon be nominated to the National Register. Very exciting!

You can help ensure that the Smith Eslick Cottage Camp becomes the remarkable museum site it should be. Help to restore the Cottage Court. Help to repurpose it as a unique historical attraction. Help to develop a lovely multi-use history park and community asset. Please pledge to support the work of the Grand Lake Area Historical Society as we continue working hard for our historic Grand Lake, and especially as we bring the exciting Cottage Camp project to fruition. THANKS!

### GRAND LAKE AREA HISTORICAL SOCIETY (GLAHS)

### DONATION OR PLEDGE CARD

I wish to support the GLAHS by making a contribution/pledge to the **Cottage Camp Campaign (CCC)**.

Name: \_\_\_\_\_

Address: \_\_\_\_\_

Phone: \_\_\_\_\_ Email: \_\_\_\_\_

Signature: \_\_\_\_\_

☐ GLAHS may publicly acknowledge my contribution.

☐ Gift in honor or memory of: \_\_\_\_\_

☐ I wish to learn more about naming opportunities.

☐ I'd like more information about including GLAHS in my estate plan.

Method of Payment (please check):

☐ Enclosed or ☐ Pledge amount: \$ \_\_\_\_\_

Please bill me ☐ monthly ☐ quarterly ☐ yearly  
(please check) for a

☐ one ☐ two or ☐ three year period.

Charge my credit or debit card \$ \_\_\_\_\_  
(please check)

☐ VISA ☐ MasterCard ☐ Discover

Cardholder Name: \_\_\_\_\_

Card Number: \_\_\_\_\_

Expiration Date: \_\_\_\_\_ 3-Digit Verification Code: \_\_\_\_\_

Cardholder Signature: \_\_\_\_\_

Make checks payable to GLAHS/Cottage Camp Campaign and mail to GLAHS, P.O.B. 656, Grand Lake, Colorado 80447

Tax ID#: 84-6105634

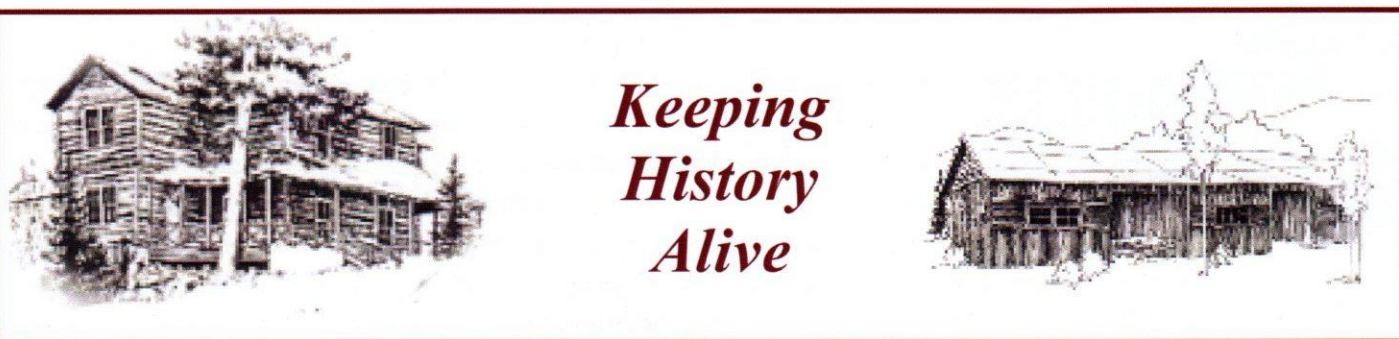
**THANK YOU FOR YOUR GENEROUS SUPPORT**

Grand Lake Area Historical Society  
P.O. Box 656  
Grand Lake, CO 80447



PRSRT STD  
ECRWSS  
U.S. POSTAGE  
**PAID**  
EDDM RETAIL

Local  
Postal Customer



**Yes! I want to become a member of the Grand Lake Area Historical Society:**

Date \_\_\_\_\_ ☐ New Member ☐ Gift ☐ Renewal ☐ Cottage Camp Donation

- ☐ Individual Membership.....\$25
- ☐ Family Membership.....\$40
- ☐ Business Membership.....\$50
- ☐ Benefactor.....\$100 - \$1,000
- ☐ Other Contribution.....

**Your Payment**

\$ \_\_\_\_\_

*Thank you!*

☐ Heritage Coalition Master Membership.... \$175 Includes memberships in four organizations

Grand Lake Area Historical Society, Grand County Historical Association, Moffat Road Railroad Museum, Grand County Characters

Name \_\_\_\_\_ E-mail \_\_\_\_\_

Mailing Address \_\_\_\_\_

Phone \_\_\_\_\_

IRS 501(c)3 #84-6105634

Return this form with your check made payable to the Grand Lake Area Historical Society,  
P.O. Box 656, Grand Lake, CO 80447

