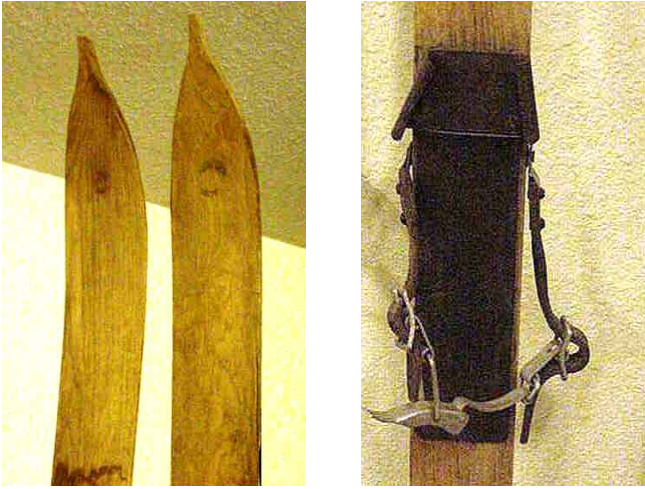


## Skis and Winter Sports Equipment



### Wood skis

Sherwins - some of first were leather harnesses riveted together by rancher Johnnie Johnston for the local school teacher.

Grand Lake Area Historical Society

Accession #: 2012.15.8



### Bamboo poles with metal rings and leather straps

Telemark Mfg. Co Duluth, MN

Grand Lake Area Historical Society

Accession #: 2012.15



### One pair of wooden skis with "skins" on bottoms #31741

10th Mountain Division gear

Grand Lake Area Historical Society

Accession#: 2021.08



**1 pair, Huski cross country skis.  
Wooden, made in Norway  
Binding - Tempo Loipe binding Made in Norway  
Explorer exclusively for Silvqa by SKIS Inc  
AFS or AF6 engraved USA**

**Grand Lake Area Historical Society**

**Accession #: 2012.15**



**1 pair Gro Wold skis, metal bindings-  
springs - screwed bindings - Kandahar,  
made in USA.  
Metal edges, screwed, tapered thickness  
Beartrap bindings  
leather strap holding together**

**Grand Lake Area Historical Society**

**Accession# 2012.15.16**



**Oak skis, points, metal boot/leather strap  
792, made in Norway  
A GRESVIG  
Made in Norway – Oslo**

**Grand Lake Area Historical Society**

**Accession #: 2012.15.17**





**Wood skis, points, leather boots & straps**

**Grand Lake Area Historical Society**

**Accession #: 2012.15.21**



**1 pair skis, bear trap bindings, painted white**

**Issued to WW II Ski Troops trained at  
Camp Hale, CO**

**Purchased at Army Surplus - US 9908 4 53  
7-0 97**

**Metal edge under foot on inside edge**

**Grand Lake Area Historical Society**

**Accession #: 2012.15.20**



**Wood skis, points, rubber sole, clamp  
leather straps, metal toe hold down, tapered  
tail end tip - thick center, tip and tail  
three grooves, warped**

**Grand Lake Area Historical Society**

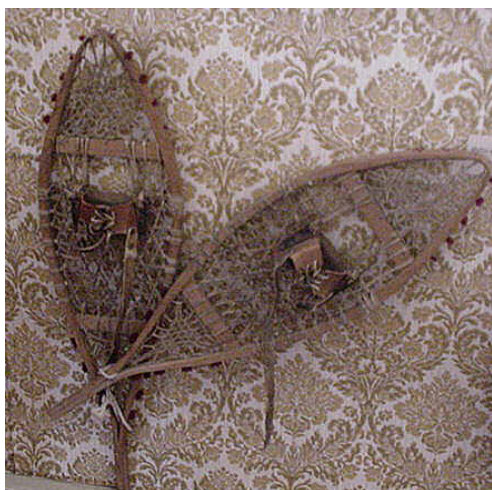
**Accession #: 2015.12.18**



**Snowshoe. 1 pair, bear paw. Used by Ezra Kauffman.**

**Grand Lake Area Historical Society**

**Accession #: 2005.267.1**



**Snowshoe. 1 pair, Alaskan, used by Ruth Kauffman McLaren**

**Grand Lake Area Historical Society**

**Accession #: 2005.267.2**

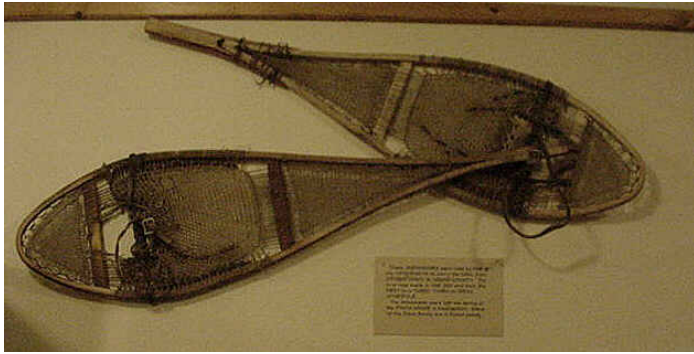


**Used by one of the McQuearys to carry mail from Georgetown to Grand County, 3 times/week, up one day, back the next.**

**Snowshoes were left one spring at Ennis house in Georgetown; Ennis family also in Grand County.**

**Grand Lake Area Historical Society**

**Accession #: 2012.15**



**Snowshoes--leather bindings, rawhide lacings. Helen Weber's snowshoes**

**Grand Lake Area Historical Society**

**Accession #: 2007.020**



**Ice Skates - pair of clamp-on metal single runner skates with key tightener on front and back, one clamp missing - no key. Stamped - Union Hardware Co. Torrington Conn USA. No 424 1/2 Size 11 1/2. Blade stamped "Hardened"**

**Grand Lake Area Historical Society**

**Accession #: 2013.14**



**Ice skates, clamps on shoes, single runner, one pair**

**Lever for clamping is engraved B & B**

**Grand Lake Area Historical Society**

**Accession #: 2013.14**