

## Paintings



**Large Elsie Patty oil painting of Grand Lake, in 1912. Some details are historically inaccurate. According to Leslie Midkiff Buck, 5/27/12, it hung in Timbercove (later Squeaky Bob's, EGs, Max & T's), owned by Bob & Marge Midkiff, and was a gift from Bob to Marge.**

**Grand Lake Area Historical Society**

**Accession #: 2005.2**



**Large oil painting of Grand Lake, wood frame, matted. Painted by Elsie Patty. Purchased by GLAHS.**

**Grand Lake Area Historical Society**

**Accession #: 2005.86**



**Still life painting titled "Bronze Urn". Pitcher, fruit and wine glass. Wood frame painted gold, matted. Painted by Nell Pauly.**

**Grand Lake Area Historical Society**

**Accession#: 2005.95**



**Painting by Grace Eslick of the Adams/Cook cottage on Grand Lake. Painting is matted in a blue wood frame.**

**Grand Lake Area Historical Society**

**Accession #: 2005.96**



**Painting by Grace Eslick of a building with trees in the background and snow on the ground titled "1st School House in Grand Lake, 1881". Painting is matted in a wooden frame.**

**Grand Lake Area Historical Society**

**Accession #: 2005.96**



**Painting, acrylic on canvas, of the Kauffman House. Painted by Walter C. Obrecht, 1991. Frame is red and gold.**

**Grand Lake Area Historical Society**

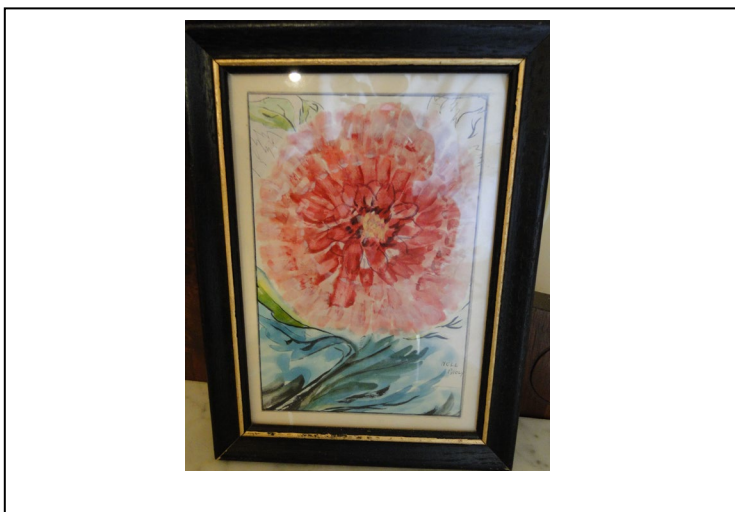
**Accession #: 2005.118**



**Water Color Painting, "The Kauffman House."**

**Grand Lake Area Historical Society**

**Accession #: 2005.289**



**Framed watercolor and ink painting of a pink flower (zinnia). Black frame w/gold trim and glass. Hand-written on back: Zenia, by Nell Pauly.**

**Grand Lake Area Historical Society**

**Accession#: 2009.51**



**Watercolor painting by Elsie C. Patty - Mountains, river, snow, yellow sky - 9.25" x 12.75" painting glued to white mat - 14" x 17"**

**Grand Lake Area Historical Society**

**Accession #: 2009.192**



**6" x 8" watercolor of Bowen Mtn taped in white mat 9" x 12" in black frame by Elsie Patty**

**Grand Lake Area Historical Society**

**Accession #: 2009.192**



**Painting on board - has picture wire fastened to back**

**He Leadeth Me Beside Still Waters**

**Nell Pauly, Apple Valley, Cal. 3-66**

**Grand Lake Area Historical Society**

**Accession #: 2016.24**



**Framed painting by Nell Pauly "On a Mountain Top"**

**Brown wooden frame**

**10" x 13"**

**Grand Lake Area Historical Society**

**Accession #: 2019.31**



**Painting signed by Elsie Patty  
Monochrome - all in green**

**Article about Elsie Patty by Idelia Riggs is  
taped to the back**

**Black wood frame**

**Grand Lake Area Historical Society**

**Accession #: 2019.44**



**Large painting in wooden frame. Gray and  
white painting of a Victorian Home.**

**Painting given to Ton and Vera Kiphardt on  
their wedding in 1973. Date on back of  
paint 12/8/73. Kiphardt's 1973 wedding gift  
Grace Eslick original**

**Grand Lake Area Historical Society**

**Accession#: 2020.03**