

## Beds

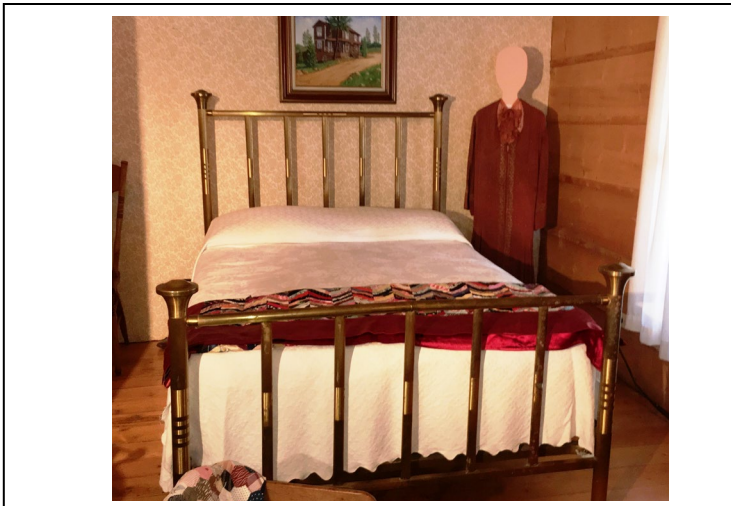


**Brass Simmons Bed - 1910**

**3/4 size bed from the estate of Sue James-Stuart**

**Grand Lake Area Historical Society**

**Accession #: 2018.24**



**Large brass bed.**

**Grand Lake Area Historical Society**

**Accession #: 2005.113**



**Golden oak antique bed, two woven spring mattresses, etchings on the head and foot boards.**

**Grand Lake Area Historical Society**

**Accession#: 2005.60**



**Wooden bed with spring mattress.**

**Grand Lake Area Historical Society**

**Accession#: 2005.78**



**Bed, wood frame, metal springs, mattress.**

**Grand Lake Area Historical Society**

**Accession#: 2005.89**



**Wooden bed with knobs for rope support**

**Custom made mattress**

**Grand Lake Area Historical Society**

**Accession#: 2018.24**





**A double iron bed frame painted white with gold painted knobs and a hair mattress.**

**Grand Lake Area Historical Society**

**Accession#: 2005.64.1**



**A double iron bed frame painted white with a hair mattress**

**Grand Lake Area Historical Society**

**Accession#: 2005.64.2**



**White iron bed**

**Grand Lake Area Historical Society**

**Accession#: 2005.36.1**



**White iron Bed**

**Grand Lake Area Historical Society**

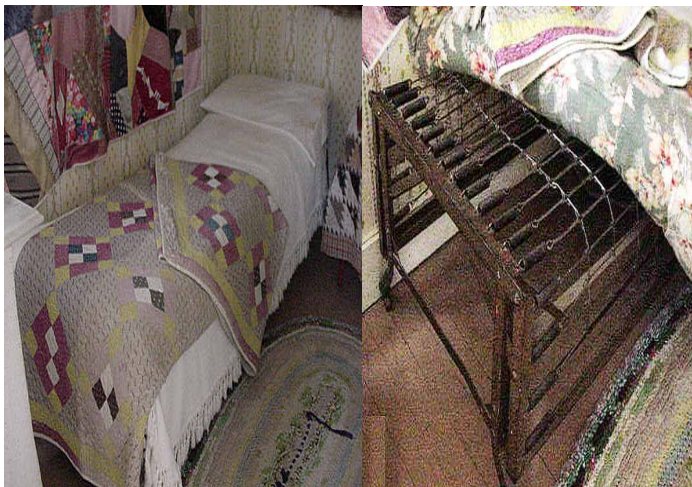
**Accession#: 2005.36.2**



**White iron bed, four by five feet.**

**Grand Lake Area Historical Society**

**Accession #: 2005.24**



**Bed with pad, metal folding frame. May have been in the Kauffman house when acquired.**

**Grand Lake Area Historical Society**

**Accession#: 2005.104**



**Brass baby bed Sides go up and down by Spring. Dates 1890-1900**

**From Mary Lehman through Bob Scott's store**

**Grand Lake Area Historical Society**

**Accession #: 2018.24**