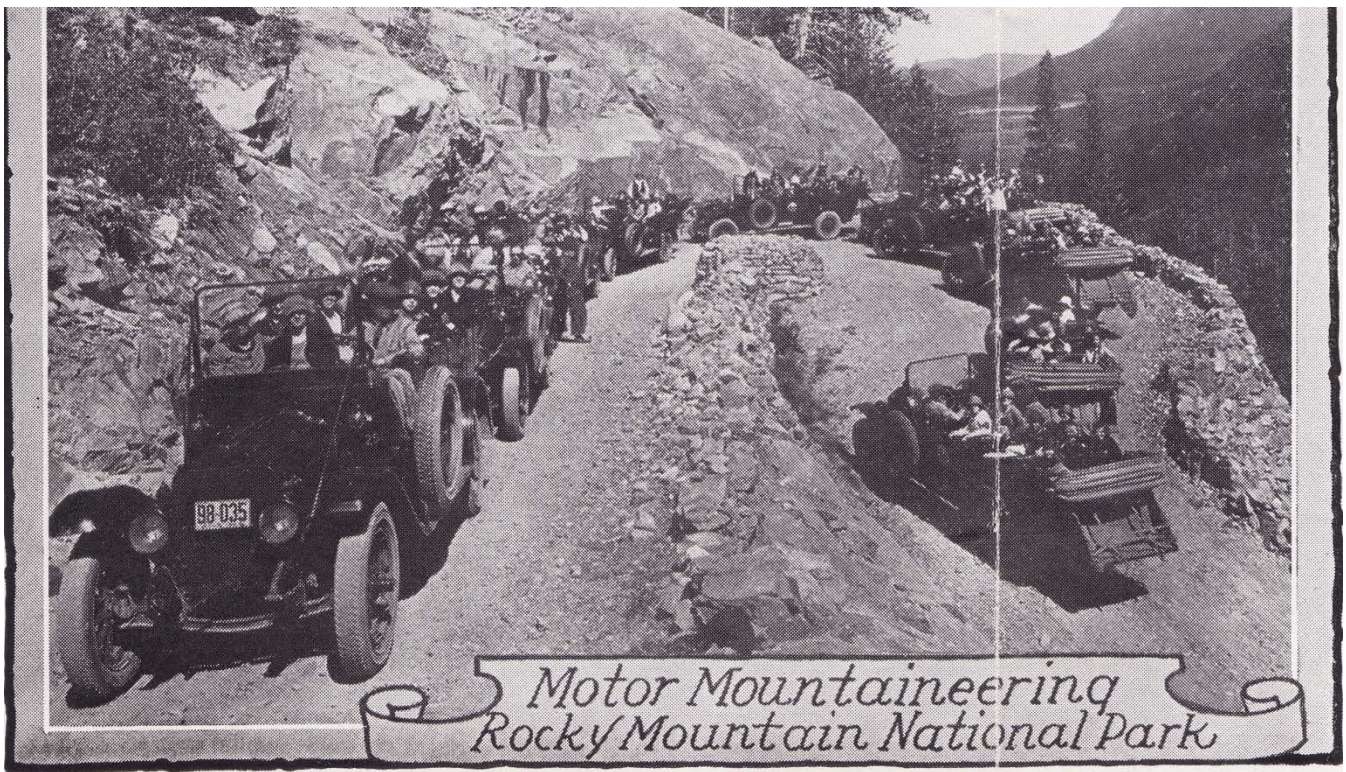


ROCKY MOUNTAIN NATIONAL PARK

CIRCLE TOURS

1920 - 1955



Circle Tour

Roe Emery, a former concessionaire from Glacier National Park, moved to Colorado in 1912. Rocky Mountain National Park was established in 1915. He purchased several bus lines and formed the Rocky Mountain Parks Transportation Company. In 1919 Emery was granted the concession to provide bus service within the park.

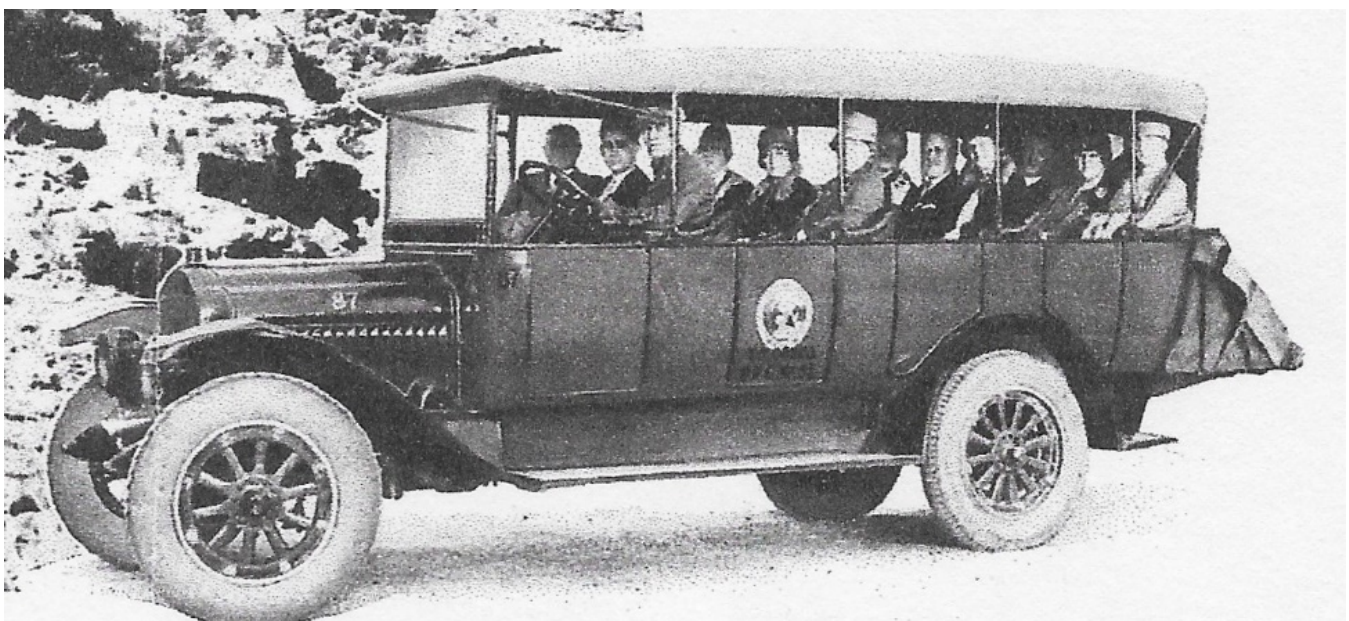


Building a lodge in the park was the brain child of Roe Emery. Emery “envisioned an easy, affordable and breath-taking Circle Tour of the central Colorado Rockies.” Tourists in volume from the Midwest and “Back East” would be transported by bus to Estes Park, over the Continental Divide and down the Grand River Valley and back to Denver.

Emery was in the transportation business but didn’t have finances to build the Grand Lake Lodge in Rocky Mountain National Park. He eventually secured financing from a wealthy friend, A. D. Lewis. Lewis also purchased the Estes Park’s Lewiston Chalet and the Hot Springs Hotel in Idaho Springs. Emery took over control of the hotels in 1923 and renamed the Lewiston the Estes Park Chalet.

With the completion of Fall River Road, the Circle Tour became a reality.

“White autos” could seat eleven people. The tours operated from 1920 to the early 1970s and were one of the first western tours to offer meals, lodging, transportation and sightseeing in one package.



In 1925 a brochure announced the Rocky Mountain National Park Circle Tour was open from June 15 to October first. 233,000 people had visited the park in 1925 coming from every state in the union and many foreign countries. A two-day trip with hotel and four meals was \$33. A three-day trip with 2 nights and seven meals was \$39.00 and a four-day Trip with three nights and ten meals was \$45.00.

The Peer of All Continuous Mountain Highways

The ride from Grand Lake to Denver—a distance of 114 miles—passes through a section of Colorado that is replete with early history. It was at Idaho Springs that gold in Colorado was first discovered in the year 1859.

Ask about the Beaver Dams—only a mile from The Chalets.

Rocky Mountain National Park Circle Tour. FOLLOWING THE FAMOUS FALL RIVER ROAD.

In devoting the entire inside of our folder to views along the already famous Rocky Mountain National Park circle tour, we are endeavoring to give the prospective visitor some idea of the vast panorama that unfolds before the eyes of the passenger as the White Automobiles of The Rocky Mountain Parks Transportation Company roll comfortably along this most scenic of all mountain highways.

All Expense Tickets—Coupons covering automobile transportation from Denver, together with hotel accommodations at the Estes Park Chalets, Grand Lake Lodge, and Hot Springs Hotel at Idaho Springs, may be included in your railroad ticket when you purchase same in your home city. Be sure to ask your ticket agent for these coupons, for your hotel accommodations are thereby assured. Holders of these coupons may remain indefinitely at any of the three hotels mentioned by arranging with the management for additional accommodations. Coupons sold by railroads will cover two, three and four-day trips.

Rates to Holders of Coupon Tickets	
Two-Day Trip—automobile transportation	\$25.50
Hotel accommodations—four meals, one lodging	7.50
Total	\$33.00
Three-Day Trip—automobile transportation	\$25.50
Hotel accommodations—seven meals, two lodgings	13.50
Total	\$39.00

Four-Day Trip—
Automobile transportation \$25.50
Hotel accommodations—ten meals, three lodgings 19.50
Total **\$45.00**

All Expense Tickets
Purchased in Denver—Should you not purchase your tickets at home, you may secure them at our Denver office, 417 Seventeenth Street or from our agents at any of the leading hotels. Scheduled cars leave this office at 7:45 A.M. and 2 P.M. daily. For two-day trip passengers will leave on 7:45 A.M. car going in Big Thompson Canyon to Estes Park for luncheon. Leaves Estes Park at 2:30 P.M. for Grand Lake, spending the night at Grand Lake Lodge. Leave Grand Lake Lodge at 8 A.M. second day, arriving at Hot Springs hotel, Idaho Springs, for luncheon, and arriving in Denver at 5 P.M. The three-day trip, same as two-day, with the exception that passengers may leave our Denver office at 7:45 A.M. or 2 P.M., remaining the first night at Estes Park Chalets, Estes Park, leaving Chalets at 8 A.M. second day, arriving Grand Lake Lodge for luncheon. Leave Grand Lake Lodge 8 A.M. third day, with luncheon at Hot Springs hotel, Idaho Springs, reaching Denver at 5 P.M.

REMEMBER stopovers may be had at any of the three places by arranging for additional hotel accommodations.

All of above rates are based on use of automobile from Denver and return. The Rocky Mountain Parks Transportation Co. operates a fleet of White autos from principal railroad points. These are comfortable, easy-riding cars, built to carry eleven passengers and not to be compared with the ordinary sight-seeing bus of the usual large city.

Rocky Mountain Lodges, Inc.
P. O. Box 1228, Denver, Colo.
Phone Main 4040 or Main 1644

Rocky Mountain National Park Circle Tour
open to travel June fifteenth to October first.
233,000 people visited Rocky Mountain National Park in 1925, coming from every state in the Union and many foreign countries.
WE EXPECT 300,000 IN 1926.
Milk and cream served in Chalets Dining Room from our own dairy. Whole milk served in sealed bottles.

All cars stop at Buffalo Bill's grave at the summit of Lookout Mountain. Here also is located Pahaska Tepee. Pahaska Tepee is operated by Johnny Baker, who was with Col. Cody during his entire career as showman. Mr. Baker has on exhibition a wonderful collection of personal relics of Col. Cody, and no admission is charged visitors to the museum.

CROSSING THE RANGE TWICE AT AN ALTITUDE IN EXCESS OF 11,000 FEET

Improvements
Continuing our policy of improving our service, we are this year enlarging our already commodious lobby at the Estes Park Chalets, increasing the Curio Department and information facilities.

At Grand Lake Lodge we have added ten new two-room lodges, with connecting bath, each room having its own lavatory and toilet.



OPERATING

ESTES PARK CHALET, ESTES PARK

GRAND LAKE LODGE, GRAND LAKE

HOT SPRINGS HOTEL, IDAHO SPRINGS

Old Folks At Home

Way down upon the Swaine River,
Far, far away,
There's where my heart is turning over,
There's where the old folks stay.
All up and down the whole creation,
Saddy I roam,
Still longing for the old plantation,
And for the old folks at home.

All the world is sad and dreary,
Everywhere I roam,
Oh! darkies, how my heart grows weary,
Far from the old folks at home.

Old Black Joe

Gone are the days when my heart was young and gay,
Gone are my friends from the cotton fields away,
Gone from the earth to a better land, I know,
I hear their gentle voices calling "Old Black Joe."

Chorus
I'm coming, I'm coming, for my head is bending low,
I hear those gentle voices calling, "Old Black Joe."

Carry Me Back to Old Virginia

Words and Music by James D. Hanft copyright by Irene Juris

Carry me back to old Virginia,
There's where the cotton and the corn and 'tatoes grow,
There's where the birds warble sweet in the spring-time,
There's where this old daddy's heart has longed to go.

Love's Old Sweet Song

Words by G. Clifton Bingham J. L. Molloy

Once in the dear dead days beyond recall,
Where on the world the mists began to fall;
Out of the dreams that rose in happy throng;
Low to our hearts Love sang an old sweet song;
And in the dusk where fell the freighted gleam,
Softly it wove itself into our dream.

Chorus
Just a song at twilight, when the lights are low,
And the flickering shadows softly come and go;
Tho the heart be weary, sad the day and long,
Still to us at twilight comes Love's old song,
Come Love's old sweet song.

Sweet Adeline

Sweet Adeline, my Adeline,
At night, dear heart, for you I pine;
In all my dreams your fair face beams,
You're the flower of my heart, sweet Adeline.

My Wild Irish Rose

My Wild Irish Rose,
The sweetest flower that grows;
You may search ev'rywhere, but none can compare
With my Wild Irish Rose.
My Wild Irish Rose,
The dearest flower that grows,
And some day, for my sake, she may let me take
The bloom from my Wild Irish Rose.

Copyright by M. Witmark & Sons

In The Evening By The Moonlight

In the evening by the moonlight,
You can hear those darkies singing,
In the evening by the moonlight,
You can hear those banjos ringing,
How the old folks would enjoy it,
They would sit all night and listen,
As we sang in the evening by the moonlight.

That Old Gang of Mine

Ge, but I'd give the world to see that old gang of mine,
I can't forget that old quartette that sang "Sweet Adeline."
Good-bye forever, old fellows and gals,
Good-bye forever, old sweethearts and pals
(God bless them),
Ge, but I'd give the world to see that old gang of mine.

Colorado

Colorado, Colorado, I love you,
Paradise for ever his "neath skies of blue,
In the Sunshine or in Shadow, ever new
Colorado, Colorado, I love you.

Harold Dillon, Inc.
Copyright assigned to Edw. B. Marks Music Co.

Polly Wolly Doodle

O, I went down south to see my Sal,
Sing polly wolly doodle all the day,
My Sal she am a stylish gal,
Sing polly wolly doodle all the day.

Chorus
Fare thee well, fare thee well,
Fare thee well, my fairy fay,
I'm off to Louisiana for to see my Susana
Sing polly wolly doodle all the day.

Grasshopper sitting on a railroad track,
Sing polly wolly doodle all the day,
Picking his teeth with a carpet tack,
Sing polly wolly doodle all the day.

Li'l Liza Jane

The got a gal and you got none, Li'l Liza Jane,
I've got a gal and you got none, Li'l Liza Jane.

Chorus
Ohe, Liza, Li'l Liza Jane,
Ohe, Liza, Li'l Liza Jane.

Come my love and marry me, Li'l Liza Jane,
Bof as happy as can be, Li'l Liza Jane.

Liza Jane done cum ter me, Li'l Liza Jane,
Bof as happy as can be, Li'l Liza Jane.

Ev'ry mornin' when I wakes, Li'l Liza Jane,
Smell de ham and buckwheat cakes, Li'l Liza Jane.

Never mo' from you I'll roam, Li'l Liza Jane,
Bestest place is home, sweet home, Li'l Liza Jane.

Levee Song

I've been wukkin' on de railroad
All de livelong day,
I've been wukkin' on de railroad
To pass de time away.
Don't yo hyar de whistle blowin'
Rise up so early in da mawn;
Doan' yo hyar de cap'n shoutin'
"Don't! blow yo' hawn!"

A Smile Will Go a Long, Long Way

When you're blue and kind of lonely too,
You'll find a smile will go a long, long way,
Though you're down, don't sit around and frown,
A little smile will go a long, long way.
Never grieve just try and make believe
The sky is blue altho' you know it's grey.
Don't you pine, its just a waste of time,
You'll find a smile will go a long, long way.

Auld Lang Syne

Should auld acquaintance be forgot,
And never bryt to mind?
Should auld acquaintance be forgot,
And days of auld lang syne?
Refrain
For auld lang syne, my dear,
For auld lang syne;
We'll take a cup o' kindness yet
For auld lang syne.

Perfect Day

When you come to the end of a perfect day
And you sit alone with your thought,
While the chimps ring out with a carol gay
For the joy that the day has brought,
Do you think what the end of a perfect day
Can mean to a tired heart,
When the sun goes down with a flaming ray
And the dear friends have to part?

(By permission Carrie Jacobs Bond & Son, Chicago, Ill.
Copyright, 1915.)

Long, Long, Trail

There's a long, long trail a-winding
Into the land of my dreams,
Where the nightingales are singing
And the white moon beams;
There's a long, long night of waiting
Until my dreams all come true;
Till the day when I'll be going down
That long, long trail with you.

Used by permission, Copyright, 1914, by M. Witmark & Sons.

Call Me Back Pal O' Mine

Call me back, Pal O'mine,
Make me dream once again;
Call me back to your heart, Pal O'mine,
Let me roam once again down in old lover's lane,
As I did in the days gone by.
Let me live in your arms
Let me thrill with your charms,
Let me kiss those sweet lips so divine,
Let me gaze in your eyes, and I'll find paradise;
Call me back to your heart, Pal O'mine.

Copyright, 1928, Dickson-Lane, Chicago.

The West, A Nest, And You

Words by Larry Yell Music by Billy Hill

The west, a nest, and you, dear—
Oh, what a dream 't would be—
A cozy little cottage—
Beside the western sea—
And who knows, some day may be
My dreams will all come true—
A cradle and a baby,
The west, a nest, and you.

Marcheta

Marcheta, Marcheta, I still hear you calling
Me back to your arms once again,
I still feel the spell of your last kiss upon me,
Since then, life has all been in God alone,
All has been sadness without you, Marcheta,
Each day finds me lonely and blue,
My poor heart is broken, I want you, "Marcheta,"
I need you, "Marcheta," I do.

Copyright, 1913, Franklin Music Co.

Let The Rest of The World Go By

With some one like you, A pal good and true,
I'd like to leave it all behind And go and find
Some place that's known To God alone,
Just a spot to call our own.
We'll find perfect peace, Where joys never cease,
Out there beneath a kindly sky, We'll build a sweet little nest
Somewhere in the West, And let the rest of the world go by.
Copyright 1919. Used by permission of M. Witmark & Sons.

Peggy O'Neil

Peggy O'Neil is a girl who could steal
Any heart, any where, any time,
And I'll put you wise how you'll recognize
This wonderful girl of mine,
Chorus
If her eyes are blue as skies,
That's Peggy O'Neil;
If she's smiling all the while,
That's Peggy O'Neil;
If she walks like a sly little rogue,
If she talks with a cute little brogue,
Sweet personality full of naughtiness,
That's Peggy O'Neil.

Copyright, 1921, Leo Post, Inc.

OUR HOTELS

LOCATED ON THE

ROCKY MOUNTAIN NATIONAL PARK CIRCLE TOUR

Stunt Songs

Ain't Got No Style

They say that _____ he ain't got no style,
He's style all the while, he's style all the while.
They say that _____ he ain't got no style,
He's style all the while, all the while.
*Substitute name in blank space.

Loudly Brays The Donkey

Loudly brays the donkey as he goes to hay,
If you do not feed him
He will run away.
Hee! Haw! He-Haw-Hay!

Scotland's Burning

Scotland's burning, Scotland's burning,
Look out, look out!
Fire! Fire! Fire! Fire!
Pour on water! Pour on water!

Three Blind Mice

(1) Three blind mice, three blind mice,
(2) See how they run, see how they run,
They (3) all ran after the farmer's wife,
She cut off their tails with a carving knife,
Now you (4) see how foolish a sight it's your friends
As three blind mice?

Smile

(Tune: "Glory, Glory Hallelujah")
It isn't any trouble just to S-M-I-L-E,
It isn't any trouble just to S-M-I-L-E,
If you find yourself in trouble
It will vanish like a bubble,
If you'll only take the trouble
Just to S-M-I-L-E.

G-r-i-n,
G-i-g-g-l-e-s,
Ha, ha, ha, ha, ha.

We May Not Be The Warmest Bunch

(Tune: "Battle Hymn of the Republic")
We may not be the warmest bunch
That ever hit the pile,
We may not be as handsome
Nor as swell as you would like
But when it comes to booster stuff,
You'll grant that we can hike,
For good old _____ Town,
Glory, Glory, Etc.
We wear our silk pajamas
In the summer when it's hot,
We wear our flannel nighties,
In the winter when it's not,
And oft-times in the springtime
And sometimes in the fall,
We jump right in between the sheets,
With nothing on at all,
Glory, Glory, Etc.

Ham and Eggs

(Tune: "Tannum") Key of D
1-Leader: Ham and Eggs.
Echo: Ham and Eggs.
L: I like mine fried good and brown.
E: I like mine fried upside down.
L: Ham and Eggs.
E: Ham and Eggs.
L: Flip 'em.
E: Flip 'em.
L: Flip 'em.
E: Flip 'em.
All: Ham and Eggs.

Mary Had a Swarm of Bees

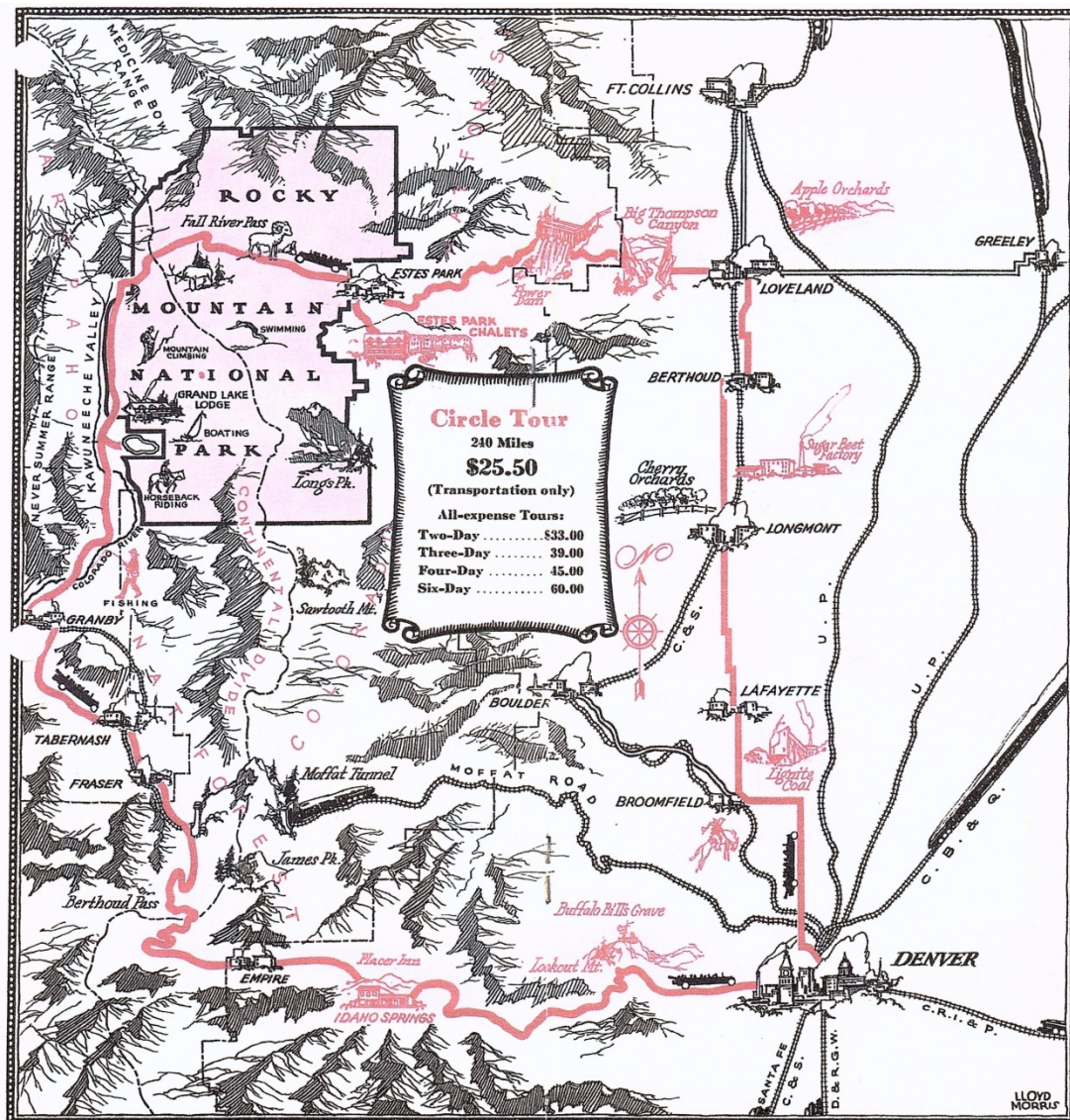
(Tune: "Merrily We Roll Along")
Mary had a swarm of bees; swarm of bees,
Swarm of bees,
Mary had a swarm of bees,
And they to save their lives,
Were forced to go where Mary went,
Mary went, Mary went,
Were forced to go where Mary went,
For Mary had the hives.

GLAHS 206-24.35

GRAND LAKE LODGE, GRAND LAKE, COLORADO

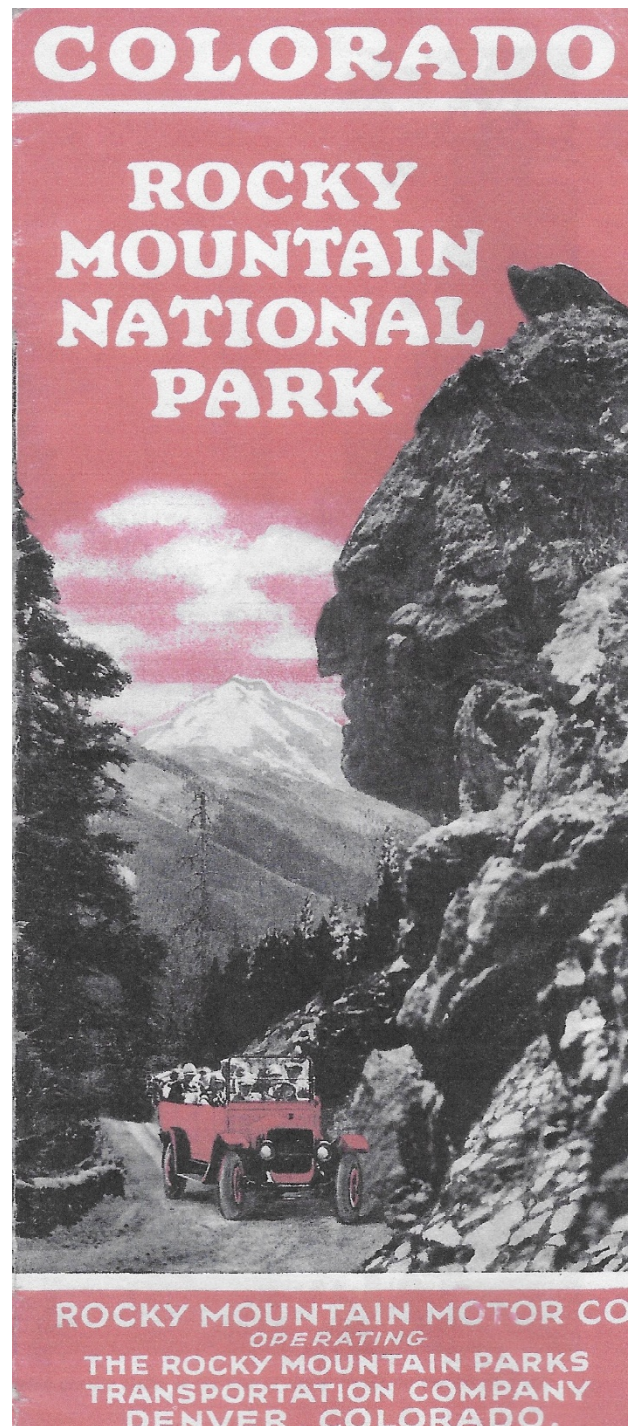
LOBBY OF GRAND LAKE LODGE

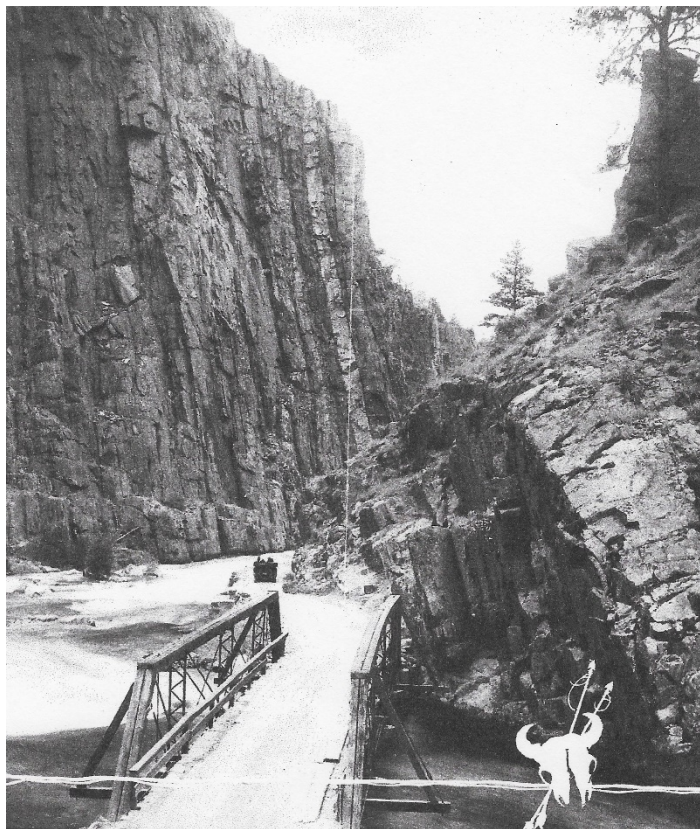
ON ROCKY MOUNTAIN NATIONAL PARK CIRCLE TOUR



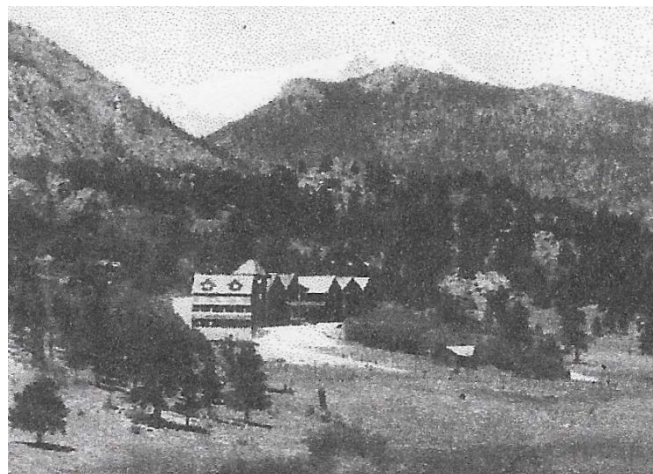
Another brochure also offers a six-day trip at \$60 beginning June 15 through September 20.

During the construction of Fall River Road, dynamite was used to remove rock in this area. The blast resulted in the unintended sculpture of an Indian. One legend says a tribe was camping in the area and one member was guarding some sheep. He heard a lamb crying and left to rescue it. Because he left his post he was turned to stone. In some places it looks like the Indian is carrying a sheep on his back. When Trail Ridge Road was built the road was moved and is now above the rock sculpture, located about 1 mile above Farview Curve.





The Rocky Mountain National Park 240-mile Circle Tour leaves from Denver through Big Thompson Canyon to Estes Park Chalet with a recommended two-night stay.



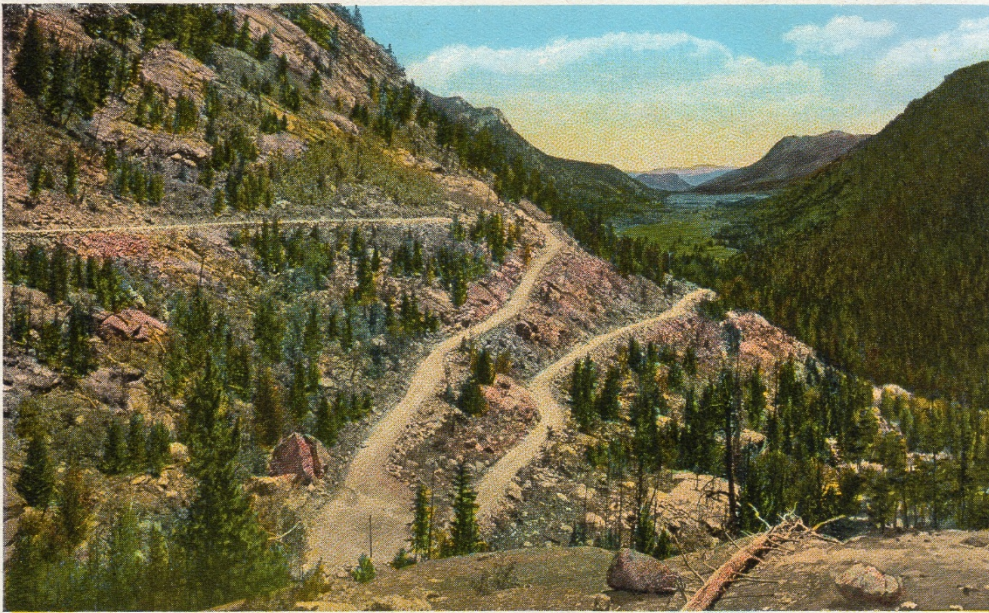
After leaving Estes Park the road follows the valley of Fall River past Sheep Lake with a view of mountain peaks in the distance. The peaks come nearer and nearer and appear higher and higher.



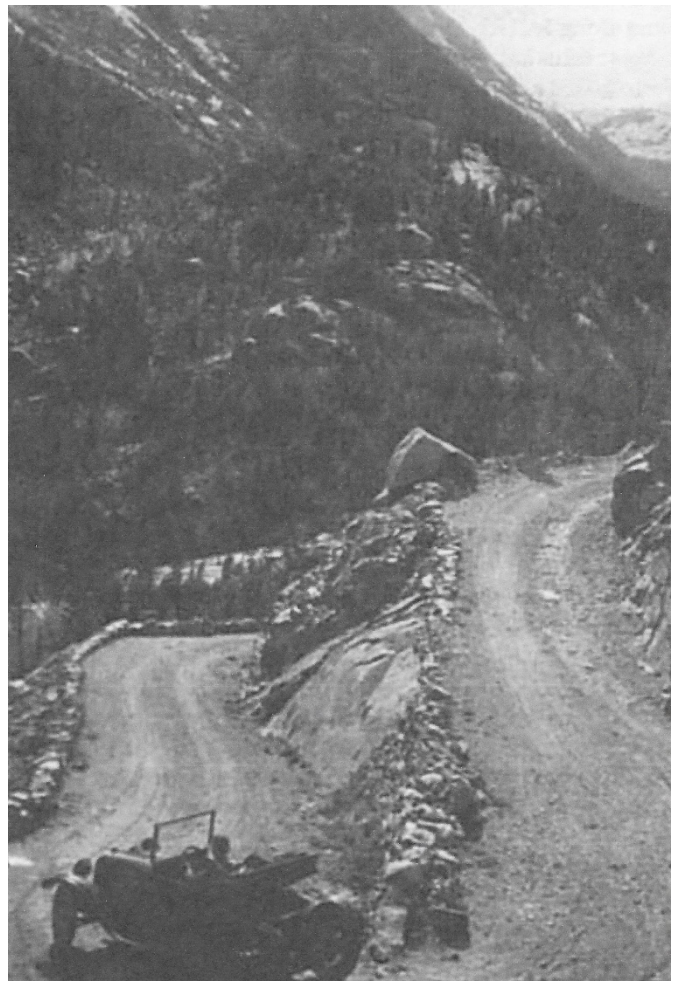
We pass potholes formed by moving water in ages past. There are shimmering glaciers, deep gorges, hidden lakes, tumbling waterfalls, high timberline meadows. Drivers navigate the many horseshoe curves.

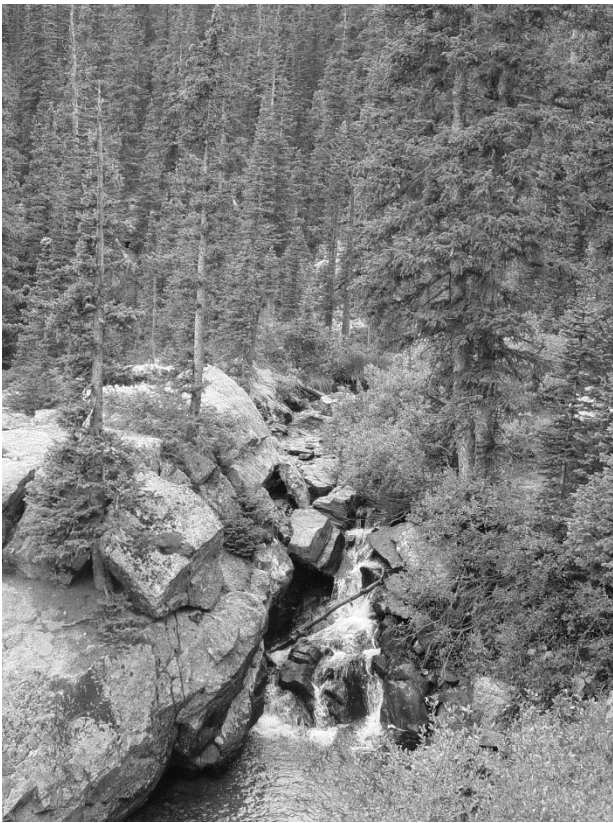






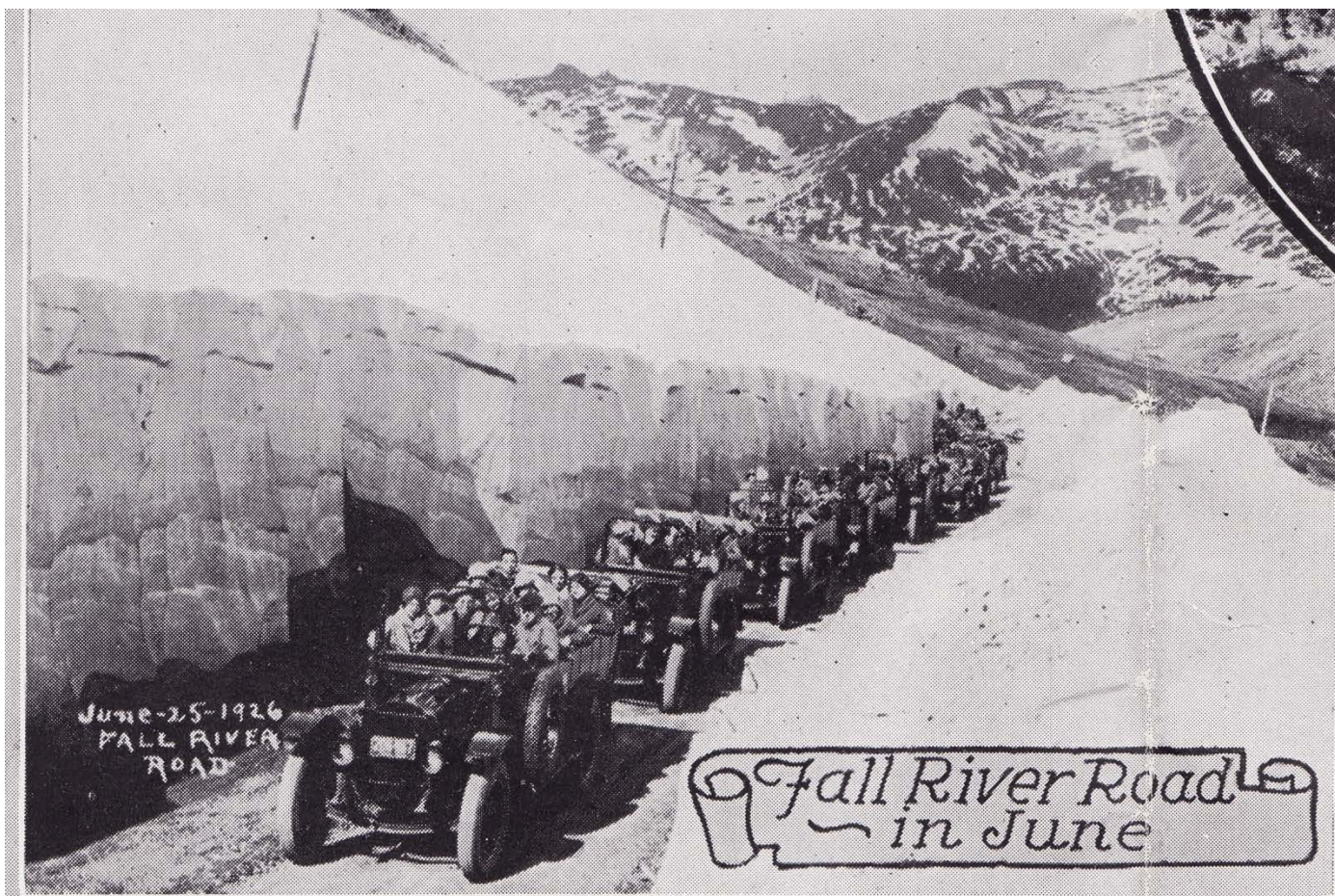
THE SWITCHBACKS ON THE FALL RIVER ROAD—ESTES PARK TO GRAND LAKE.





ESTES PARK AND GRAND LAKE ROAD





June-25-1926
FALL RIVER
ROAD

Fall River Road
in June



Looking back from the top



You reach Fall River Pass, the highest point in the road at an elevation of 11,797 feet. Here you are above timberline.





Riding along the crest of the Divide you see the Never Summer Range. Not far away is Specimen Mountain which is of volcanic origin. The Indians called it Smoking Mountain.



Strange as it may seem one descends in order to cross the Continental Divide at Milner Pass. Again, you drop into the forest zone.



When you reach Milner Pass you are at 10,759 feet. Just before reaching the Divide the road crosses the old Ute Indian Trail. When Colorado sought statehood she did so under the name "Tahosa" meaning Dwellers of the Mountain Top. The Arapaho Indians who used to haunt the passes of the Divide were given the name "Man of the Blue Sky".



You cross the Continental Divide at Cache la Poudre Lake. The road passed high above the lake and went beneath the pinnacles. Later the road was moved to the other side of the Lake.



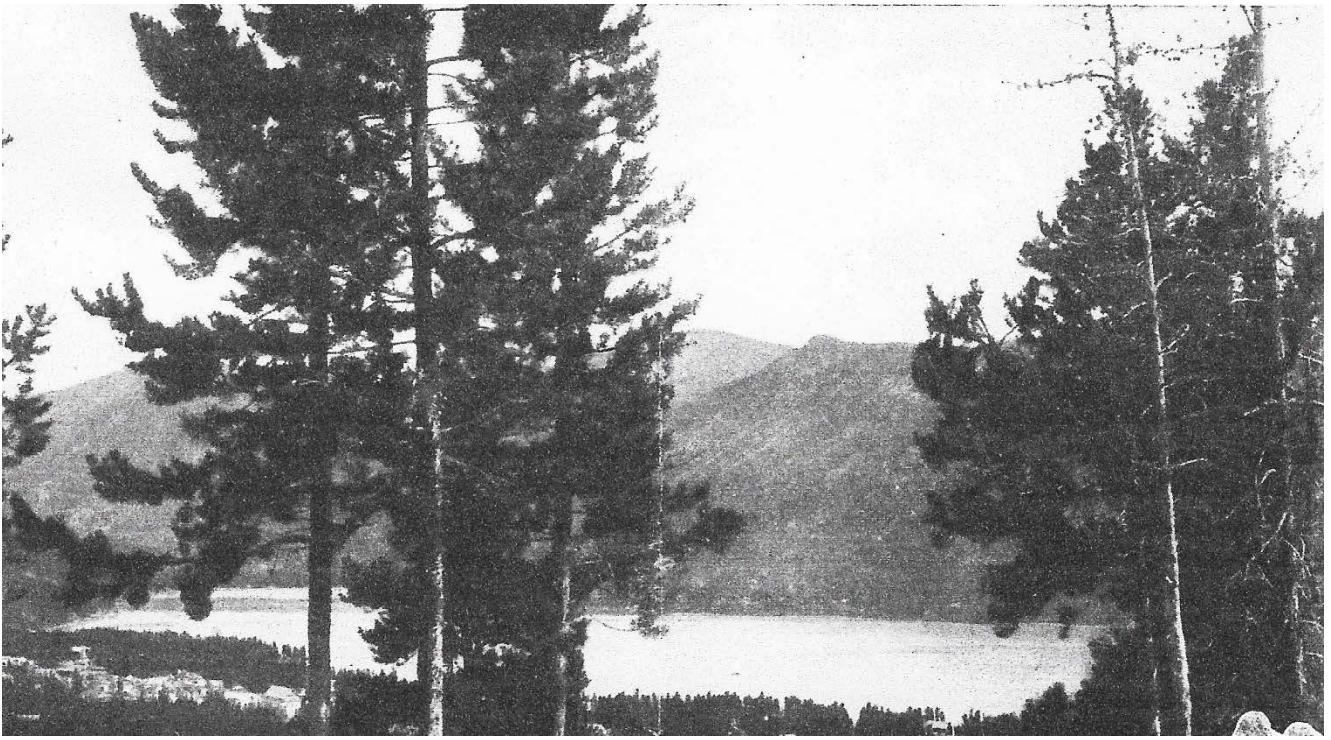


And now your comfortable mountain bus bears you down a winding wooden canyon to Grand Lake where the night is spent in dreamless sleep 8,369 feet above sea level, a fitting climax to the first half of the Circle Tour. (Recommend a stay of two nights).





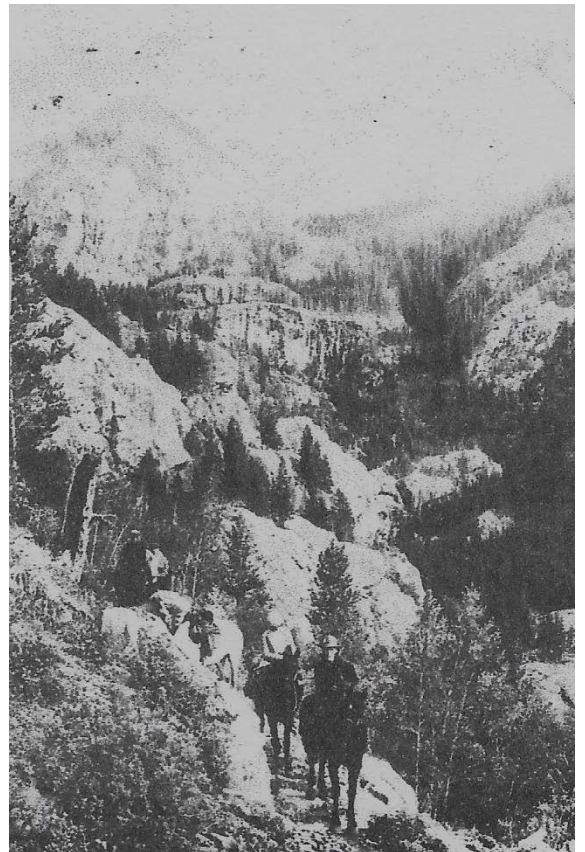
The night is spent at the Grand Lake Lodge.



Grand Lake is the largest natural lake in Colorado though only 1 ½ miles long. It sparkles like a jewel in its regal setting of lofty mountains. Grand Lake is associated with Indian tradition and tragedy. A tribe of Ute Indians made their summer home on these shores. They were surprised and massacred by marauding Cheyenne and Arapahoe who came over Flattop Mountain trail from the plains country. Just before the battle all the Ute squaws and papooses were placed on a raft and sent out on the lake for safety, but a squall capsized their craft and all perished. To this day the Ute avoid the vicinity of Grand Lake.

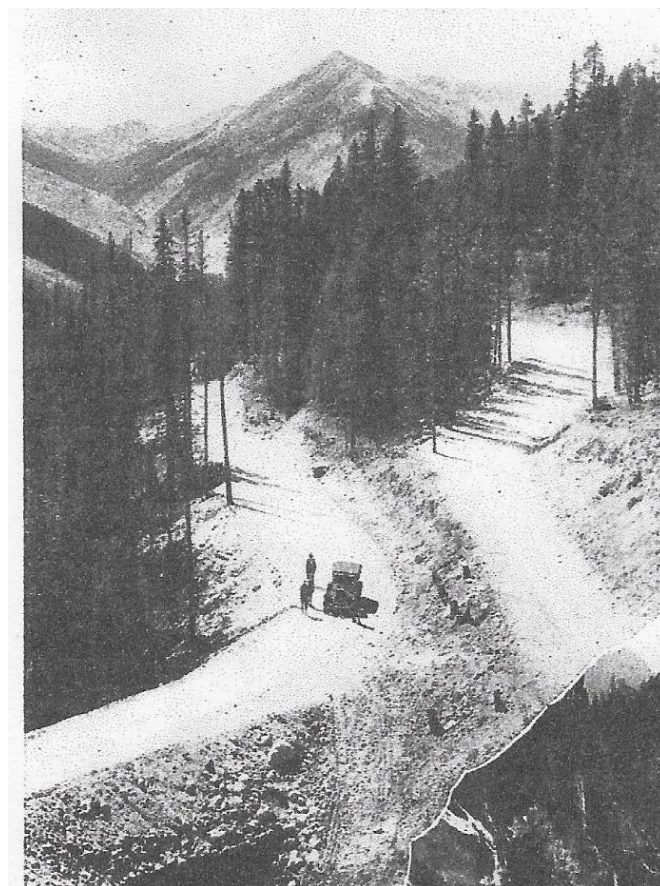
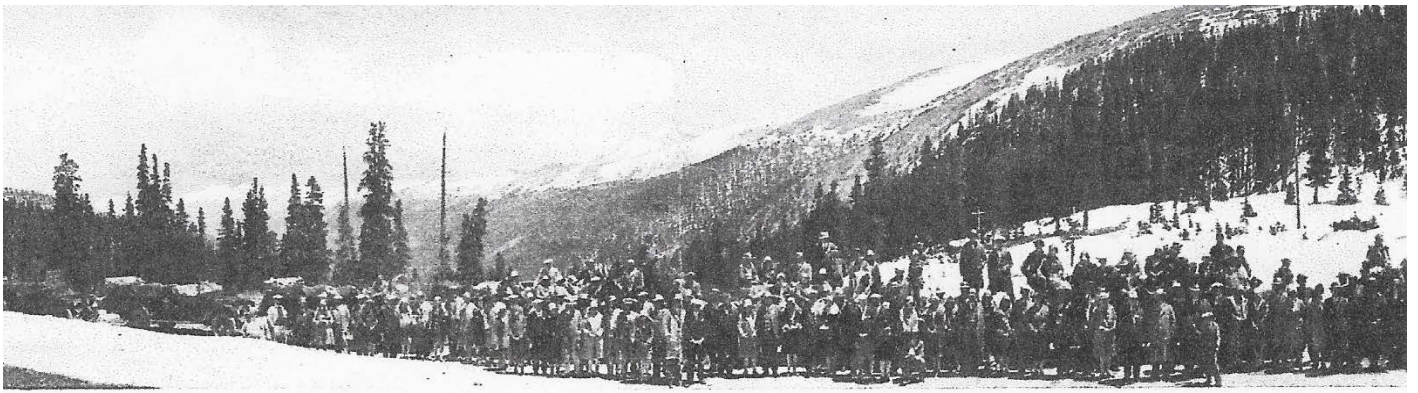


There are many spectacular trips on foot, horseback, or by motor boat around Grand Lake.



Refreshed and rested in the pure, pine-scented air of the Rockies the automobiles are ready to bear you on the second leg of the Circle Tour on the 114-mile journey back to Denver (for an additional \$6 you may remain another full day at Grand Lake.)

Leaving Grand Lake the road winds down the Colorado River and up the Fraser River through the Arapaho National Forest and past the western portal of the six mile long Moffat Tunnel. From here you climb several thrilling miles over Berthoud Pass, 11,300 feet high. Here the Continental Divide is again crossed.



Down the canyon of Clear Creek your car descends and stops at Idaho Springs for luncheon at Placer Inn. It was in this Clear Creek valley that gold was discovered in 1859. After leaving the Clear Creek Canyon you glide over the celebrated municipal boulevard which leads through Denver Mountain Parks.



The road climbs gradually and from Lookout Mountain you get a magnificent panoramic view of mountain and plain. Atop Lookout Mountain are the graves of Buffalo Bill (Col. W. F. Cody) and his wife Louise. Near this spot is Wildcat Point, known among Indians as a signal mountain where they sent messages in smoke by day and fire by night. There is an interesting museum on Lookout, containing fascinating relics of the early days in the west.

After leaving Lookout, the mountain boulevard, called Lariat Trail, descends to the plains, zigzagging in thrilling hairpin curves, past historic Golden where George Pullman first dreamed of the Pullman car, and then all too soon you are at your journey's end in Denver.



ROCKY MOUNTAIN
NATIONAL PARK

Estes Park and Grand Lake

THE town of Estes Park, situated at the eastern entrance of Rocky Mountain National Park, and the town of Grand Lake, at the western entrance, are substantial communities where seasonal activities are centered during the summer months.

- At both you will find desirable living accommodations in considerable variety; they embrace American and European Plan hotels, Dude Ranches, Cottage Camps and furnished housekeeping cottages. Some of these are right in town, while others are located at varying distances in the mountains. Consult your travel bureau for information concerning these facilities.
- You will find convenience in buying a ticket direct from your home city to Estes Park or Rocky Mountain National Park; just ask your ticket agent to include coupons for the bus trip from Denver to the parks.
- The buses used in this service are built especially for vacation tours in the mountains: comfortable and with plenty of power.

ROCKY MOUNTAIN
NATIONAL PARK

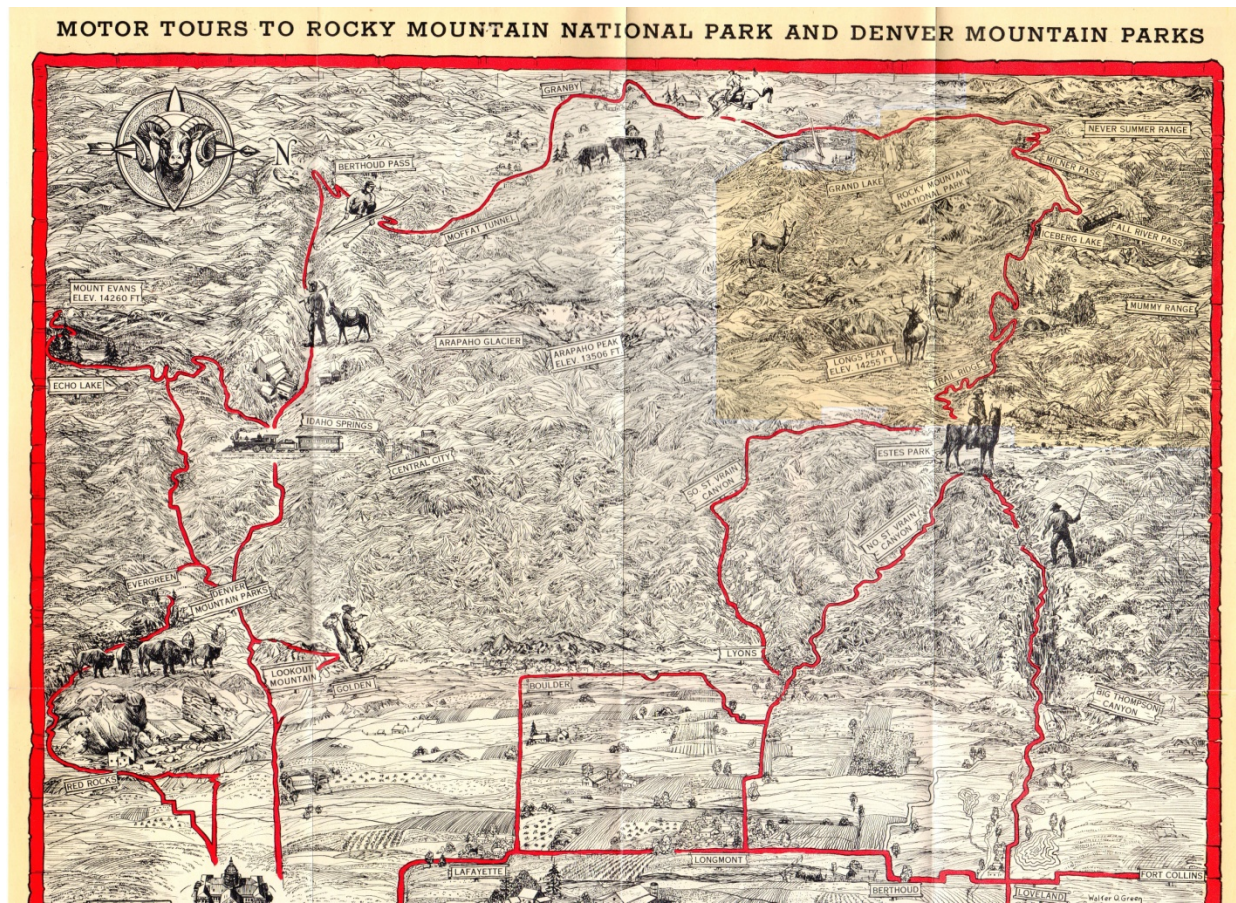


*Estes Park
Grand Lake*



ROCKY MOUNTAIN
MOTOR COMPANY

• DENVER, COLORADO •



1955 Brochure

Circle Tour June 15 – September 15 Sightseeing Tours in Glass Top Busses
Between Denver and Estes Park there is a choice of two routings: one is by way of Loveland and Big Thompson Canyon, the other, by way of Boulder and South Saint Vrain Canyon.

Prices are listed just for the bus fares. The Circle Tour may be completed in two days by leaving Denver in the morning, going by way of Estes Park and Rocky Mountain National Park, staying overnight at Grand Lake and returning to Denver shortly after noon of the second day. However, "Circle Tour" tickets are good for stopovers during the summer season.

Other tours:

Estes Park to Grand Lake	One-way \$5 or Round Trip \$8
Trail Ridge & Fall River Pass	\$3.50
Bear Lake	\$2
Longs Peak Round Trip	\$2

MOTOR TOURS IN AND ABOUT ROCKY MOUNTAIN NATIONAL PARK

Grand Lake Lodge — Capacity 275
Estes Park Chalet — Capacity 250
American and European Plan

ESTES PARK TO GRAND LAKE

Via Trail Ridge, Fall River Pass and Continental Divide	
Read Down	Read Up
9:00 AM 2:30 PM Lv Estes Park	Ar 5:30 PM
12 Noon 5:30 PM Ar Grand Lake	Lv 2:30 PM
Fare—Round Trip \$8.00 Fare—One way \$5.00	

TRAIL RIDGE - FALL RIVER PASS

8:30 AM and 2:00 PM Lv Estes Park	
12 Noon and 5:30 PM Ar Estes Park	Fare—\$5.00

NATIONAL PARK SCENIC CIRCLE

8:30 AM and 2:00 PM Lv Estes Park	
11:50 AM and 5:15 PM Ar Estes Park	Fare—\$3.60

BEAR LAKE

8:30 AM and 2:00 PM Lv Estes Park	
11:50 AM and 5:15 PM Ar Estes Park	Fare—\$2.00

LONGS PEAK

(Fare—Round Trip \$2.00)

Leave Estes Park 7:00 AM and 5:00 PM
Leave Longs Peak 8:00 AM and 6:00 PM

MOTOR TOURS IN DENVER MOUNTAIN PARKS SYSTEM

MOUNT EVANS - CENTRAL CITY

14,260 Feet Above Sea Level
Highest Automobile Road in North America

June 10 to September 16

Leave Denver at 9:00 AM; return at 5:30 PM

Stop for luncheon at Echo Lake Bus Fare \$8.00

DENVER MOUNTAIN PARKS

A Circle Tour of 65 Miles, including
Lookout Mountain, Red Rocks Park and Bear Creek Canyon

9:15 AM Lv Denver (via Bear Creek)	Ar 1:15 PM
2:15 PM Lv Denver (via Lookout Mountain)	Ar 6:15 PM
Year Around Service Bus Fare—\$4.00	

DENVER CITY TRIP

One hour and thirty minutes Bus Fare—\$1.50

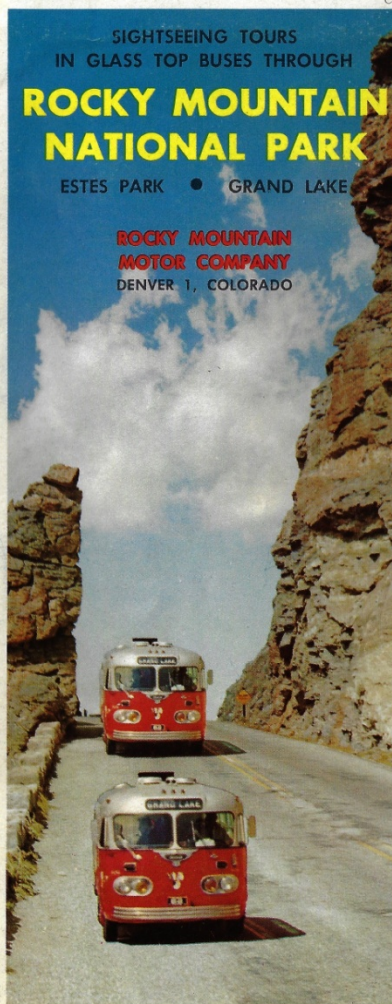
June 10 to September 16

Lv 9:00 AM; 11:00 AM; 2:00 PM; 4:00 PM

September 16 to June 10 Leave 10:00 AM and 2:00 PM

Issued 1955. COLORADO TRANSPORTATION COMPANY d/b/a Rocky Mountain Motor Co. is authorized by the United States Government to serve the public in Rocky Mountain National Park. All fares are subject to Federal Transportation Tax.
LITHOGRAPHED IN U.S.A.
FORM No. 2.

PIKES PEAK LITHOGRAPHING CO.



ROCKY MOUNTAIN NATIONAL PARK

Circle Tour

June 15 to September 15

This tour may be completed in two days by leaving Denver in the morning, going by way of Estes Park and Rocky Mountain National Park, staying overnight at Grand Lake and returning to Denver shortly after noon of the second day. However "Circle Tour" tickets are good for stopovers during the summer season. This tour crosses the Continental Divide at two places.

9:00 AM	Lv	Denver Bus Terminal
9:15 AM	Lv	Denver Rail Terminal
10:20 AM	Lv	Longmont
10:55 AM	Lv	Loveland
10:05 AM	Lv	Boulder
12:10 PM	Ar	Estes Park via Big Thompson Canyon
12:30 PM	Ar	Estes Park via South St. Vrain Canyon
2:30 PM	Lv	Estes Park
5:30 PM	Ar	Grand Lake—Stop overnight
8:15 AM	Lv	Grand Lake
9:55 AM	Lv	Granby
10:00 AM	Lv	Berthoud Pass
10:50 AM	Lv	Idaho Springs—Clear Creek Canyon
11:50 AM	Ar	Denver Rail Terminal
12:05 PM	Ar	Denver Bus Terminal

Bus fare for the complete tour, \$16.00

Between Denver and Estes Park there is a choice of two routings: one is by way of Loveland and Big Thompson Canyon, the other, by way of Boulder and South Saint Vrain Canyon. Departing time from Denver is the same for both.

DAILY TOURS BETWEEN DENVER AND ESTES PARK

A—Via Big Thompson Canyon		B—Via Boulder, South St. Vrain Canyon, Longs Peak	
Read Down	STATION	Read Up	STATION
9:00 AM Lv	Denver Bus Terminal	Ar 6:25 PM	Denver Bus Terminal
9:15 AM Lv	Denver Rail Terminal	Ar 6:10 PM	Denver Rail Terminal
10:20 AM Lv	Longmont	Lv 5:05 PM	Longmont
10:55 AM Lv	Loveland	Lv 4:30 PM	Loveland
12:10 PM Ar	Estes Park	Lv 3:15 PM	Estes Park
A—June 15 to Sept. 20		B—June 1 to Sept. 30	

C—Via North St. Vrain—July 1 to Aug. 31		D—via North St. Vrain—July 1 to Aug. 31	
Read Down	STATION	Read Up	STATION
9:00 AM 2:30 PM Lv	Den. Bus Term.	Ar 3:10 PM	Ar 12:05 PM
9:15 AM 2:45 PM Lv	Den. Rail Term.	Ar 2:55 PM	Ar 11:50 AM
10:05 AM 3:45 PM Lv	Boulder	Lv 2:10 PM	Lv 11:00 AM
10:50 AM 4:25 PM Lv	Lyons	Lv 1:30 PM	Lv 10:10 AM
11:45 AM 5:15 PM Lv	Allens Park	Lv 9:20 AM	Lv 9:20 AM
11:51 AM 5:21 PM Lv	Copeland Lake	Lv 9:14 AM	Lv 9:14 AM
11:55 AM 5:25 PM Lv	Meeker Park	Lv 9:10 AM	Lv 9:10 AM
12:00 M 5:35 PM Lv	Longs Peak	Lv 9:00 AM	Lv 9:00 AM
12:10 PM 5:40 PM Lv	Baldy Peak	Lv 8:55 AM	Lv 8:55 AM
12:20 PM 5:50 PM Lv	Estes Park Chalet	Lv 8:45 AM	Lv 8:45 AM
12:30 PM 6:00 PM Ar	Estes Park	Lv 12:45 PM	Lv 8:30 AM

C—June 1 to Sept. 30 D—June 15 to Sept. 20
Fare—Round Trip \$8.00 Fare—One way \$5.00
E—via North St. Vrain—July 1 to Aug. 31