



MILNER PASS & CONTINENTAL DIVIDE ALT. 10,759 FT ESTES GRAND LAKE ROAD - COLO. G10

**Title Milner Pass Continental Divide
Altitude 10,759 ft Estes – Grand Lake Road, Colo**

Sanborn G 10

Black and White

**Grand Lake Area Historical Society
Accession # 2017.32.09 - 061**



THE PATH ALONG THE LAKE SHORE, GRAND LAKE, COLO G.12

Title The Path Along the Lake Shore, Grand Lake, Colo

Sanborn G 12

Black and White

**Postmark: Estes Park, Colo Aug 14, 1944
1 cent stamp**

**Grand Lake Area Historical Society
Accession # 2017.32.09 - 77**



Title Colorado River at Grand Lake
Mt Craig (Baldy) in the Distance, Colo

Sanborn G 31

Black and White



Title The Rapids Hotel, Grand Lake, Colo

Sanborn G 39

Black and White

Postmark: Grand Lake, Colo. Aug 31, 1927

Two cent stamp, cancelled



Title The Corner Cupboard, Grand Lake, Colo

Sanborn G 82

Black and White

Grand Lake Area Historical Society

Accession # 2014.02.01



Title Winter Scene Grand Lake, Colo

Sanborn G 88

Black and White

Grand Lake Area Historical Society

Accession # 2017.32.09 - 162



Title The Pine Cone Inn, Grand Lakes Amusement Spot

Sanborn G 93

Black and White

Grand Lake Area Historical Society

Accession # 2017.32.09 - 79



Title Interior Of Pine Cone Inn, Grand Lake Colo

Sanborn G 96

Black and White

Grand Lake Area Historical Society

Accession 2014.02.02



Title Looking East Along North Shore of Grand Lake, Colo.

Sanborn G 107

Black and White

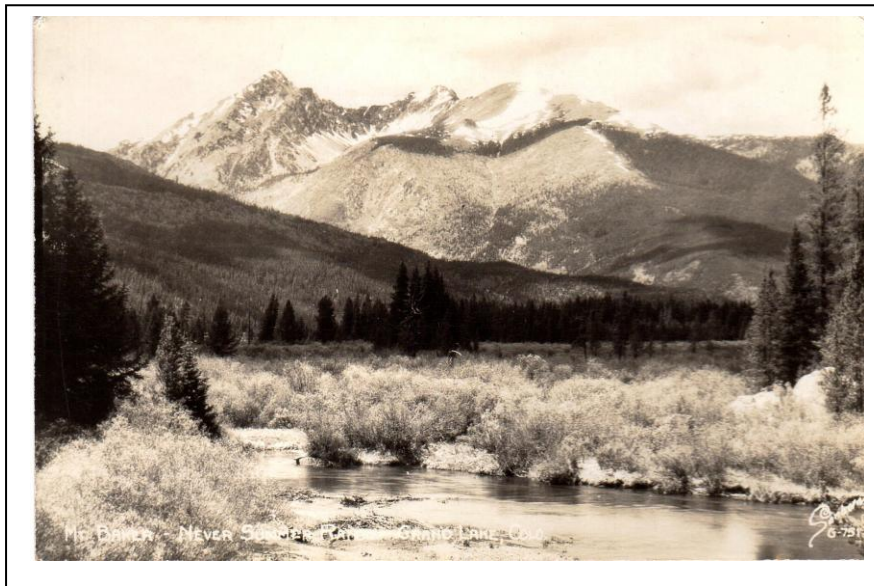
Grand Lake Area Historical Society

Accession 2017.32.09 - 73

The town pier is the long one.

McCarty had a small floating one with an arch at each end

They had one little building that a photographer left



Title Mt Baker Never Summer Range Grand Lake, Colo

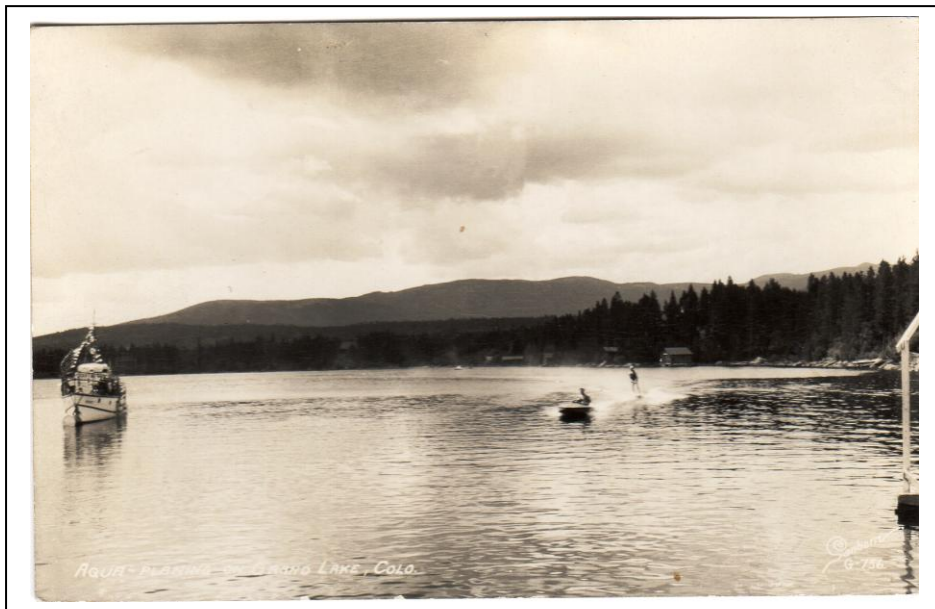
Sanborn G 751

Black and White

Grand Lake Area Historical Society

Accession 2018.22.13

Now in Rocky Mountain National Park – Colorado River in front in the Kawuneeche Valley



Title Aqua Planing in Grand Lake, Colo

Sanborn G 756

Black and White

Grand Lake Area Historical Society

Accession #2017.32.09 - 012



Title Panorama of Grand Lake, Village and Range
From Shadow Mt. Lookout – Grand Lake, Colo.

Sanborn G 774

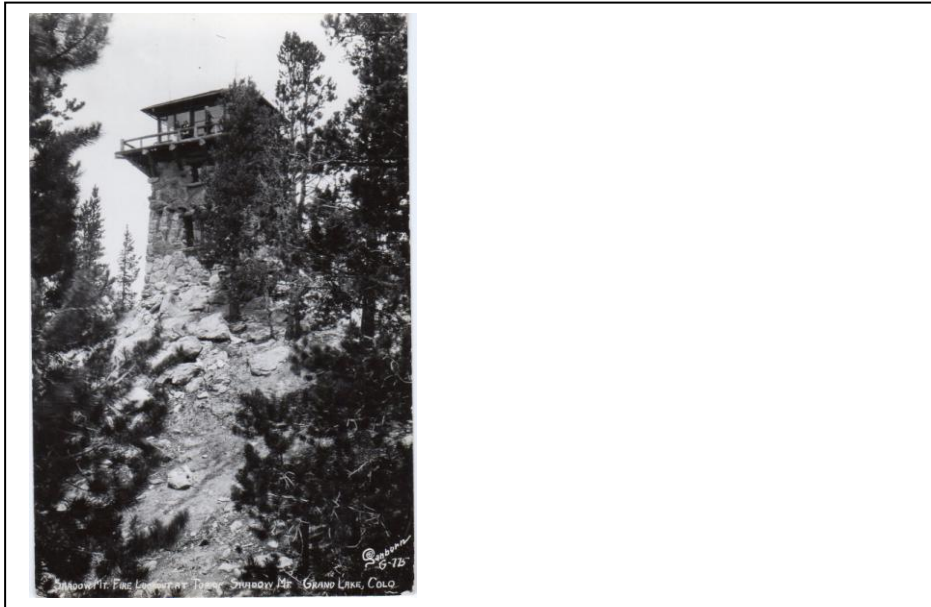
Black and White

Postmark: Grand Lake, Colo. Sep 4, 1944

One cent stamp - cancelled

Grand Lake Area Historical Society

Accession 2017.32.09 - 010



**Title Shadow Mt Fire Lookout at Top of Shadow Mt
Grand Lake, Colo**

Sanborn G 775

Black and White

Grand Lake Area Historical Society

Accession # 2017.32.09 - 63



Title Boat Landing Grand Lake, Colo

Sanborn G 781

Black and White

**Postmark Estes Park Colo July 16, 1938
One cent stamp cancelled**

Grand Lake Area Historical Society

Accession # 2017.32.09 - 139

Two copies of the postcard



Title North Inlet - Grand Lake, Colo.

Sanborn G 783

Black and White

**Grand Lake Area Historical Society
Accession # 2017.32.09 - 44**



Title Along the Lake Shore at Grand Lake, Colo.

Sanborn G 795

Black and White

**Grand Lake Area Historical Society
Accession # 2017.32.09 - 49**

**Two copies of this postcard – one damaged
Postmark Fort Collins, Colo 1947
Airmail stamp cancelled #2017.32.09 - 130**

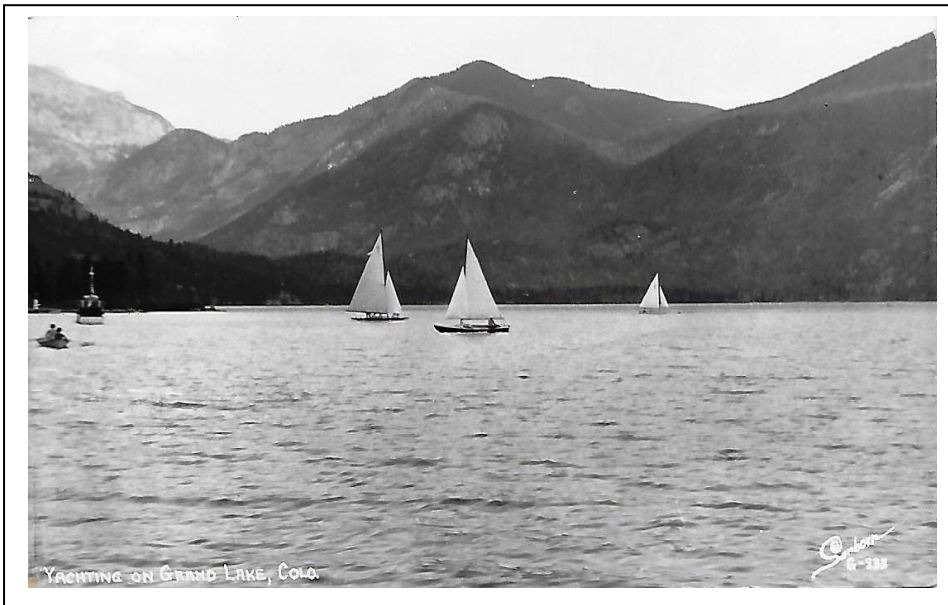


Title Grand Lake from Grand Lake Lodge

Sanborn G 834

Black and White

**Grand Lake Area Historical Society
Accession # 2018.22.04**



Title Yachting on Grand Lake, Colo.

Sanborn G 835

Black and White

**Grand Lake Area Historical Society
Accession # 2019.32.09 - 004**

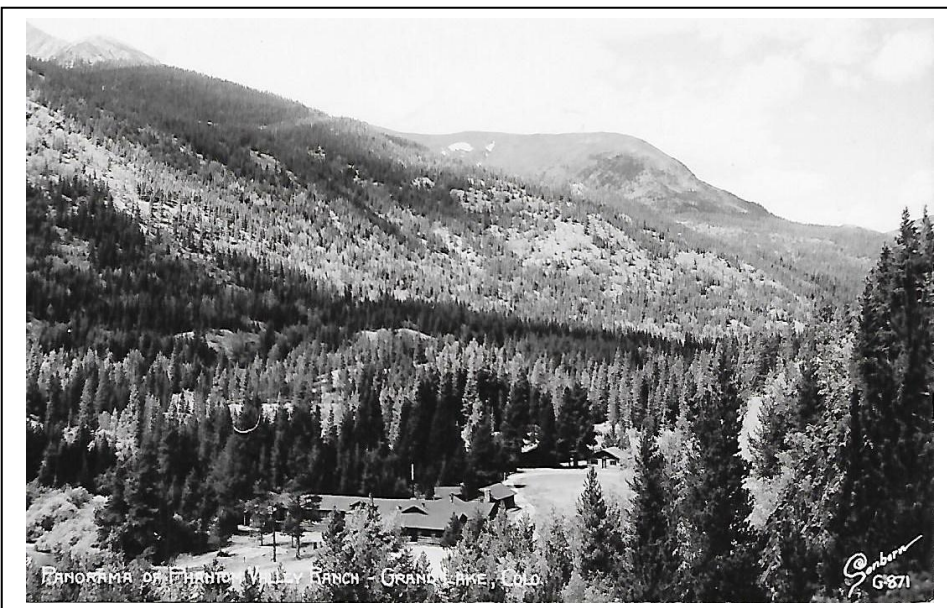


Title Lobby Grand Lake Lodge

Sanborn G 854

Black and White

**Grand Lake Area Historical Society
Accession # 2018.22.10**



**Title Panorama of Phantom Valley Ranch -
Grand Lake, Colo.**

Sanborn G 871

Black and White

**Postmark: Estes Park, Colo Aug 27, 1945
One Cent stamp cancelled**

**Grand Lake Area Historical Society
Accession # 2017.32.09 - 76**



Title Cabins in Grand Lake, Colo

Sanborn G 903

Black and White

Copy

**Grand Lake Area Historical Society
Accession # 2017.32.09 - 140**



Title Little Church in the Pines at Grand Lake, Colo.

Sanborn G 936

Black and White

**Grand Lake Area Historical Society
Accession #**

2018.22.07



Title Interior of the Little Church in the Pines

Sanborn G 942

Black and White

Grand Lake Area Historical Society

Accession # 2018.22.08



**Title Grand Lake Community Church
Grand Lake, Colo.**

Sanborn G 943

Black and White

Grand Lake Area Historical Society

Accession # 2018.22.06

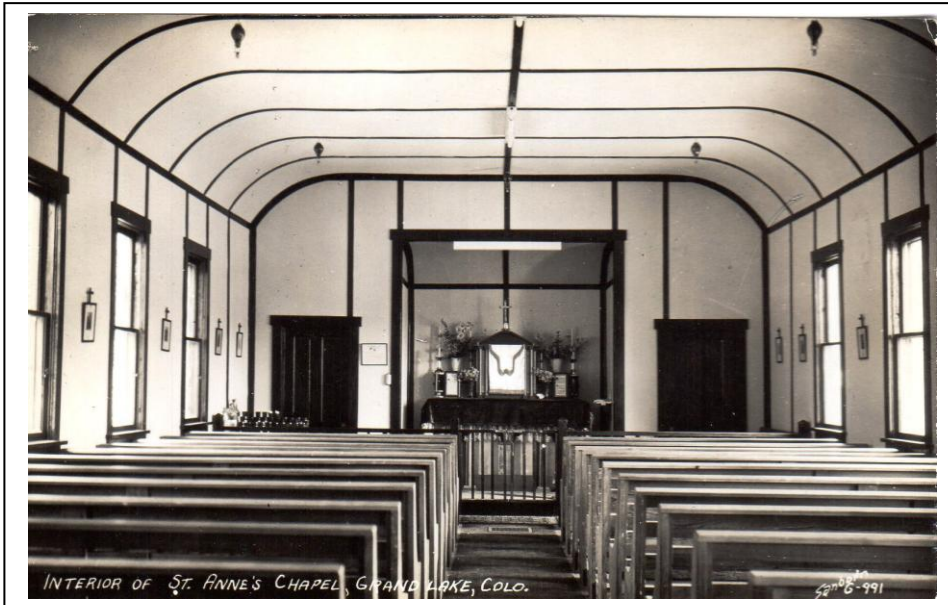


Title Public School, Grand Lake, Colo.

Sanborn G 957

Black and White

Grand Lake Area Historical Society
Accession # 2017.32.09 - 005



Title Interior of St. Anne's Chapel, Grand Lake, Colo

Sanborn G 991

Black and White

Grand Lake Area Historical Society
Accession # 2018.22.09



Title The Street at Grand Lake, Colo. Looking West

Sanborn G 998

Black and White

Grand Lake Area Historical Society

Accession # 2019.07.12



Title Lobby and Dining Room, El Navajo Lodge
Grand Lake, Colo.

Sanborn G 1017

Black and White

Grand Lake Area Historical Society

Accession # 2016.23.02



DINING ROOM - EL NAVAJO LODGE - GRAND LAKE, COLO.

Title Dining Room El Navajo Lodge
Grand Lake, Colo.

Sanborn G 1018

Black and White

Grand Lake Area Historical Society
Accession # 2016.23.03



DINING ROOM AT THE CORNER CUPBOARD - GRAND LAKE, COLO.

Title Dining Room at the Corner Cupboard
Grand Lake, Colo

Sanborn G 1027

Black and White

Grand Lake Area Historical Society
Accession # 2018.35.01



Title El Navajo Lodge on the Shores of Shadow Mt. Lake At Grand Lake, Colo.

Sanborn G 1028

Black and White

**Grand Lake Area Historical Society
Accession # 2016.23.01**

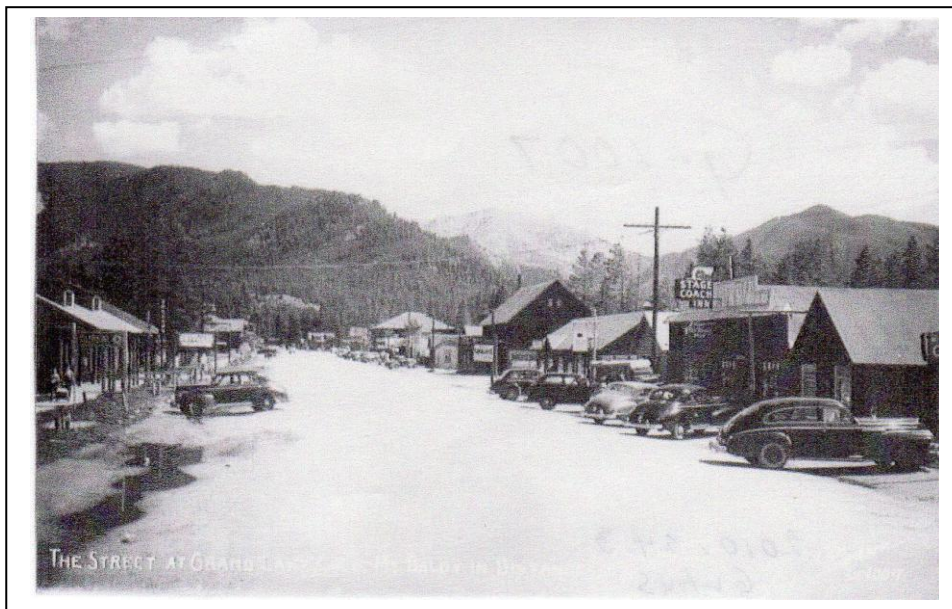


Title Dining Room at the Corner Cupboard Grand Lake, Colo.

Sanborn G 1031

Black and White

**Grand Lake Area Historical Society
Accession # 2019.07.10**



Title The Street at Grand Lake, Colo
Mt. Baldy in distance

Sanborn G 1007

Black and White
Paper copy

Grand Lake Area Historical Society
Accession # 2010.24.3



Title Annual Yacht Races on Grand Lake, Colo.

Sanborn X 71

Black and White

Grand Lake Area Historical Society
Accession # 2017.32.09 - 136



YACHT RACES DURING REGATTA WEEK, AT GRAND LAKE, COLO.

X 72

Title Yacht Races during Regatta Week
At Grand Lake, Colo.

Sanborn X 72

Black and White

Grand Lake Area Historical Society
Accession # 2017.32.09 - 29



ANNUAL YACHT RACES ON GRAND LAKE, COLO.

Title Annual Yacht Races on Grand Lake, Colo

Sanborn X 1095

Black and White

Grand Lake Area Historical Society
Accession # 2018.22.01



Title Beach in front of Corner Cupboard Cottages,
Grand Lake, Colo.

Sanborn X 1373

Black and White

Grand Lake Area Historical Society
Accession # 2017.32.09 - 74

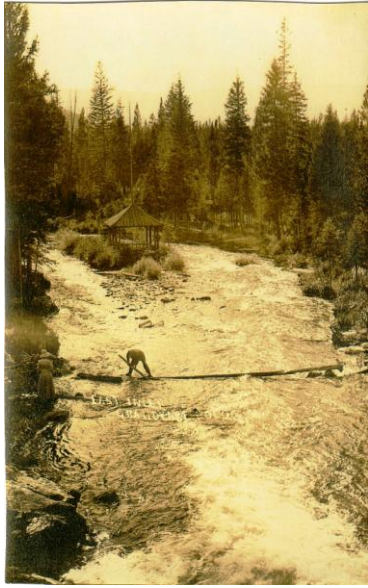


Title Corner Cupboard Cottages at Grand Lake, Colo.

Sanborn X 1574

Black and White

Grand Lake Area Historical Society
Accession # 2017.32.09 - 134



Title East Inlet, Grand Lake, Colo

Sanborn (maybe)

**Black and White
Photo copy**

**Grand Lake Area Historical Society
Accession # 2017.32.09 - 104**

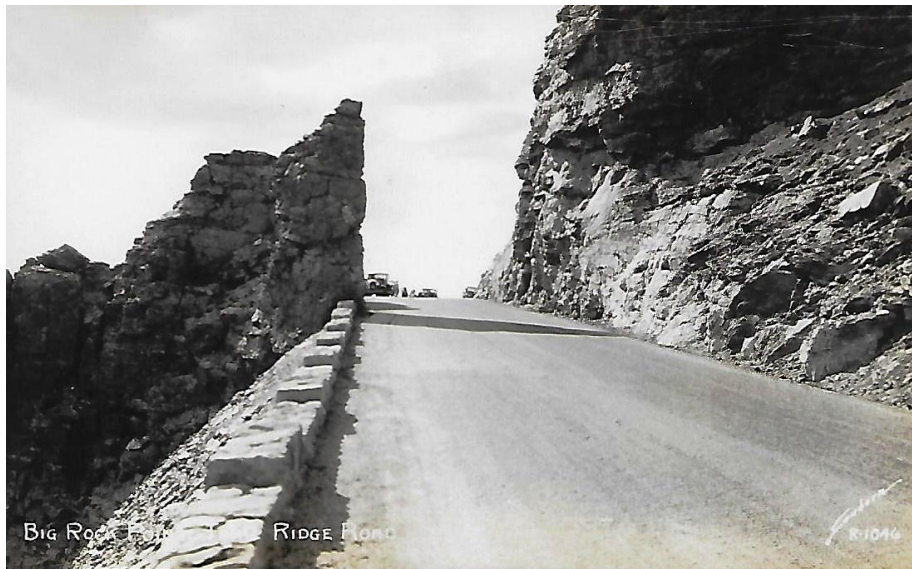


Title Rock Cut, Trail Ridge Road, Colo.

Sanborn R 242

Black and White

**Grand Lake Area Historical Society
Accession # 2017.32.09 - 107**



Title Big Rock Point on Trail Ridge Road

Sanborn R 1046

Black and White

**Grand Lake Area Historical Society
Accession # 2017.32.09 - 014**



Title Mummy Range
from the Beaver Dam in Hidden Valley
Trail Ridge Road, Colo

Sanborn R 884

Black and White

**Grand Lake Area Historical Society
Accession # 2018.22.11**



Title Long's Peak from Trail Ridge Road

Sanborn R 860

Black and White

**Grand Lake Area Historical Society
Accession # 2018.22.15 a & b**

Two postcards alike

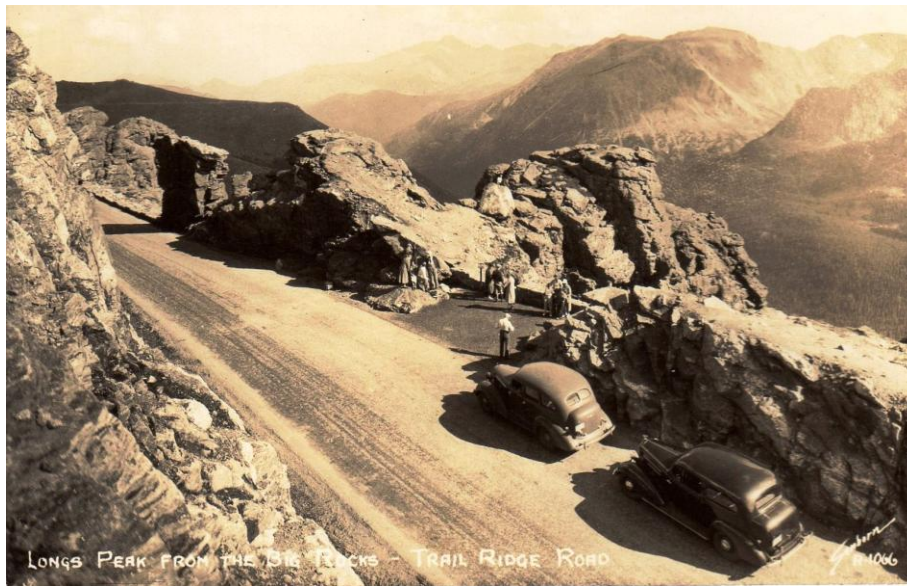


**Title Mummy Range from the Switchbacks
on Trail Ridge Road**

Sanborn R 870

Black and White

**Grand Lake Area Historical Society
Accession # 2018.2.12**



**Title Longs Peak from the Big Rocks
Trail Ridge Road**

Sanborn R 1066

Black and White

**Grand Lake Area Historical Society
Accession # 2018.22.16**



Title Looking Back from Trail Ridge Road

Sanborn R 1202

Black and White

Grand Lake Area Historical Society
Accession # 2018.22.14

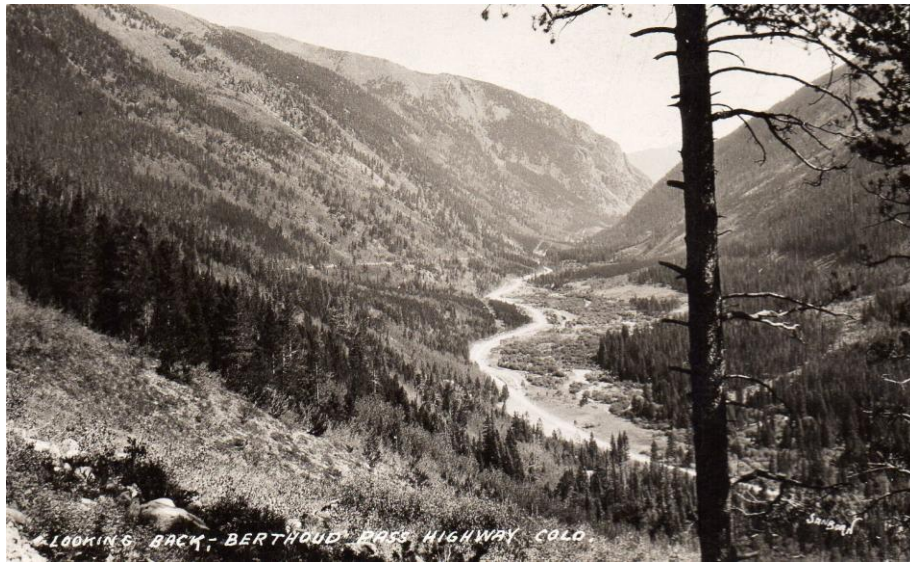


Title Scene of Grand Lake, Colo.

Sanborn (signature only)

Black and White

Grand Lake Area Historical Society
Accession # 2017.32.09 - 59



Title Looking Back, Berthoud Pass Highway, Colo.

Sanborn (signature only)

Black and White

Grand Lake Area Historical Society
Accession # 2017.32.09 - 66



Title Switchbacks on Western Slope of Berthoud Pass

Sanborn (signature only)

Black and White

Grand Lake Area Historical Society
Accession # 2017.32.09 - 64



BERTHOUD PASS HIGHWAY, COLO.

Title Berthoud Pass Highway, Colo.

Sanborn (signature only)

Black and White

Grand Lake Area Historical Society
Accession # 2017.32.09 - 57



VISTA OF THE PEAKS FROM THE WESTERN SLOPE OF BERTHOUD PASS, COLO.

Sanborn
B-776

Title Vista of the Peaks from the Western Slope
Of Berthoud Pass, Colo.

Sanborn B 776

Black and White

Grand Lake Area Historical Society
Accession # 2018.22.17



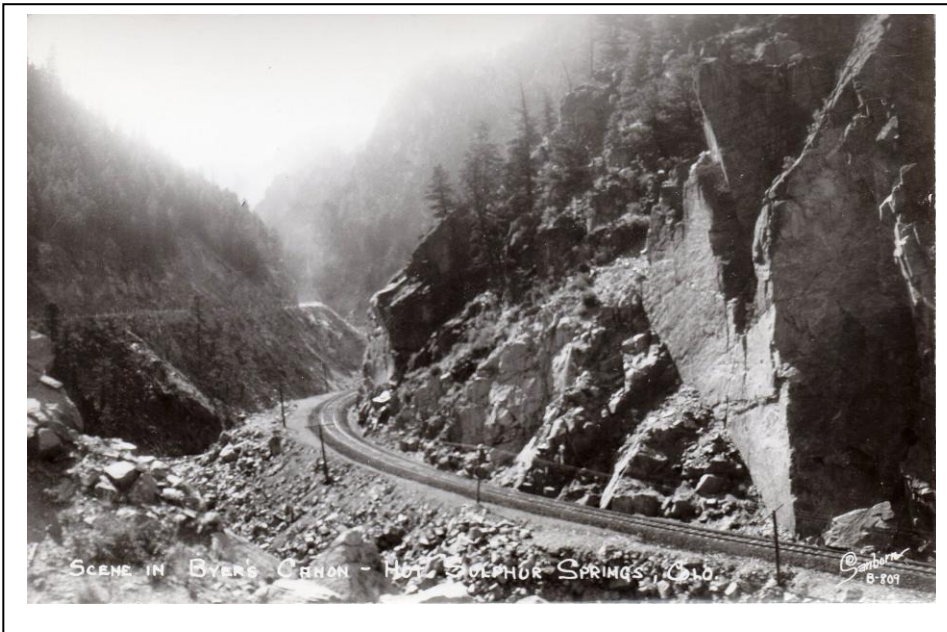
Title Panorama of Hot Sulphur Springs, Colo.

Sanborn B 867

Black and White

Postmark: Parshall Colo Oct 28, 1949
1 cent stamp cancelled

Grand Lake Area Historical Society
Accession # 2017.32.09 - 127



Title Scene in Byer's Canon – Hot Sulphur Springs, Colo.

Sanborn B 809

Black and White

Grand Lake Area Historical Society
Accession # 2012.52.6



Title New Highway Viaduct and Bridge at Colorado River between Hot Sulphur Springs and Granby Potatoe Hill in Background

Sanborn B 812

Black and White

**Grand Lake Area Historical Society
Accession # 2012.52.7**



Title Panorama of Hot Sulphur Springs, Colo.

Sanborn B 867

Black and White

“Where we spent our honeymoon June 17-23, 1946”

**Grand Lake Area Historical Society
Accession # 2012.52.2**

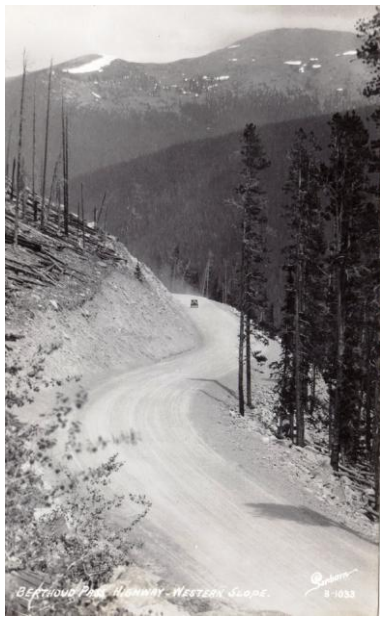


Title Byers Canon – Hot Sulphur Springs, Colo.

Sanborn B 869

Black and White

**Grand Lake Area Historical Society
Accession # 2012.52.3**



Title Berthoud Pass Highway – Western Slope.

Sanborn B 1033

Black and White

**Grand Lake Area Historical Society
Accession # 2012.52.4**



Title On the Western Slope of Berthoud Pass, Colo.

Sanborn B 1028

Black and White

**Grand Lake Area Historical Society
Accession # 2012.52.9**



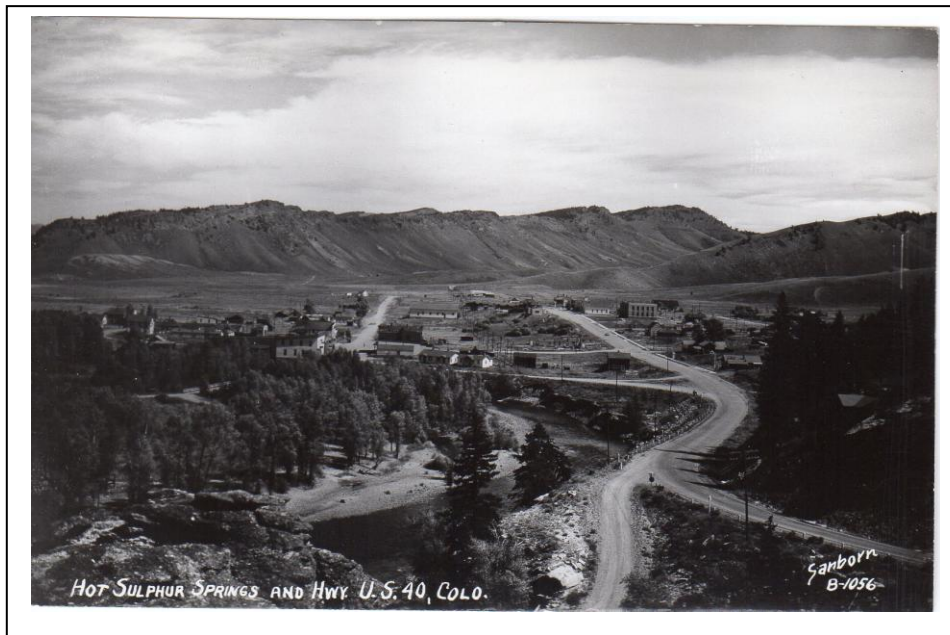
Title Hot Sulphur Springs – On Hwy US 40, Colo.

Sanborn B 1054

Black and White

Two postcards alike

**Grand Lake Area Historical Society
Accession # 2012.52.1 a & b**



Title Hot Sulphur Springs and Hwy. U.S. 40, Colo.

Sanborn B 2056

Black and White

Grand Lake Area Historical Society
Accession # 2012.52.8



Title Scene at Drowsy Water Ranch,
Hot Sulphur Springs, Colo.

Sanborn B 1058

Black and White

Grand Lake Area Historical Society
Accession # 2012.52.5



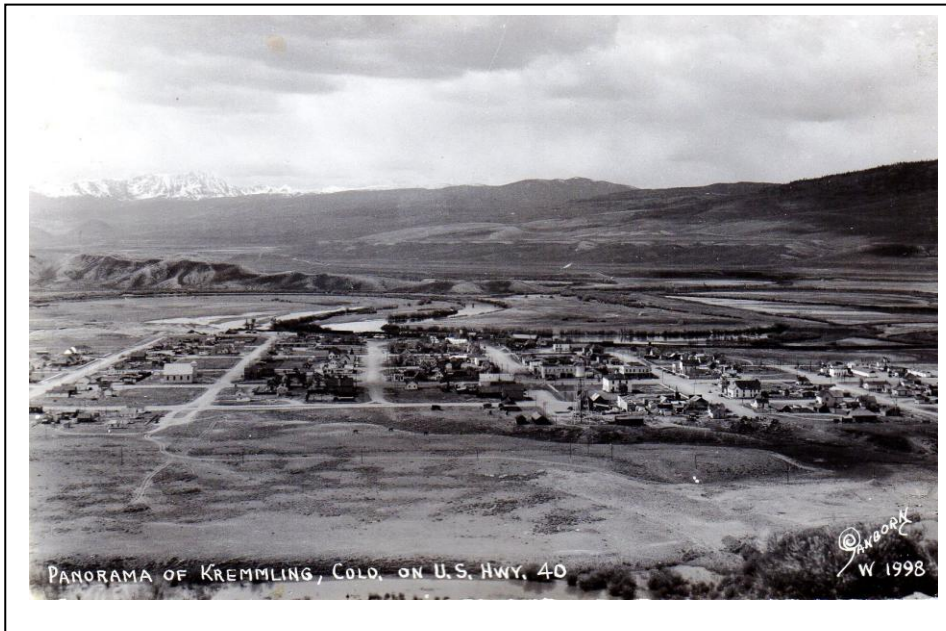
Title Skiing Scene at the summit of Berthoud Pass, Colo.

Sanborn B 1070

Black and White

Grand Lake Area Historical Society

Accession # 2018.22.03



Title Panorama of Kremmling, Colo. On U.S. Hwy. 40

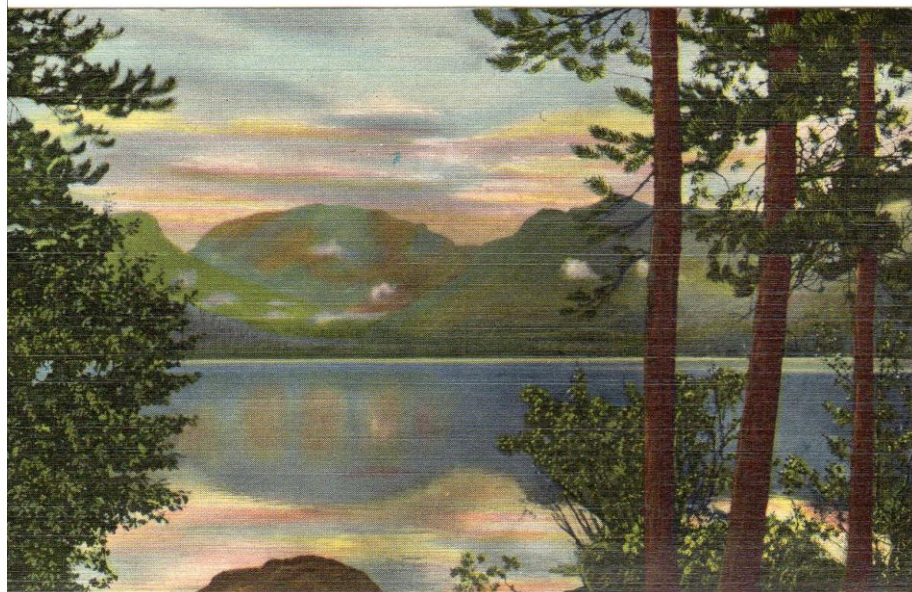
Sanborn W 1998

Black and White

Message dated Jan 26, 1945

Grand Lake Area Historical Society

Accession # 2017.32.09 - 128

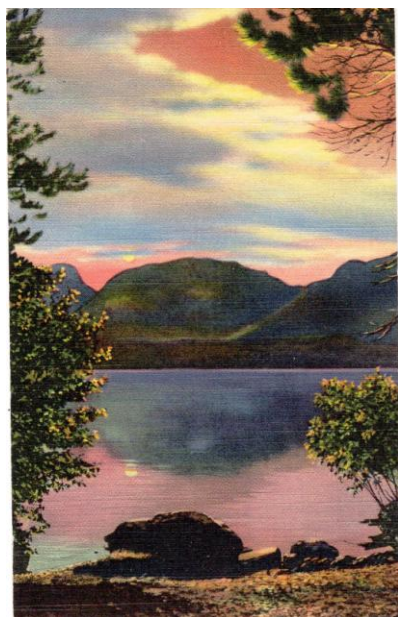


Title Grand Lake, Altitude 6376 Ft .
And Mt. Baldy, Rocky Mountain National Park

Sanborn Souvenir Co. 2277

Color

Grand Lake Area Historical Society
Accession # 2010.30.2



Title Mt. Baldy and Grand Lake
Rocky Mountain National Park, Colorado

Sanborn Souvenir Co. 2223

Color

Grand Lake Area Historical Society
Accession #



Title Grand Lake Lodge
Rocky Mountain National Park, Colorado

Sanborn Souvenir Co 2218

Color

**Grand Lake Area Historical Society
Accession # 2019.07.01**



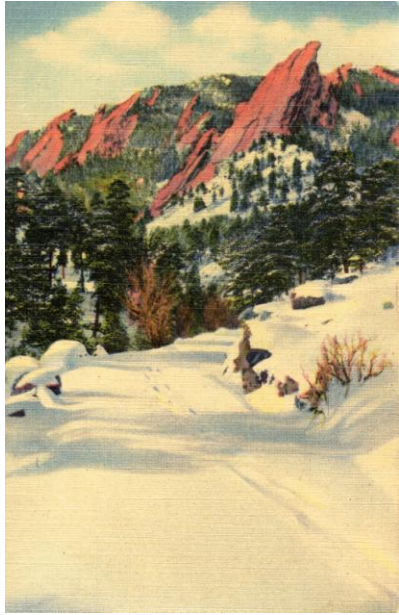
Title Mt Ypsilon and Mummy Range
From the Trail Ridge Road
Estes Park to Grand Lake, Colo.

**Sanborn Souvenir Co. 2207
Same as R870 black & white**

Color

Dated in pencil 1943

**Grand Lake Area Historical Society
Accession # 2019.07.06**

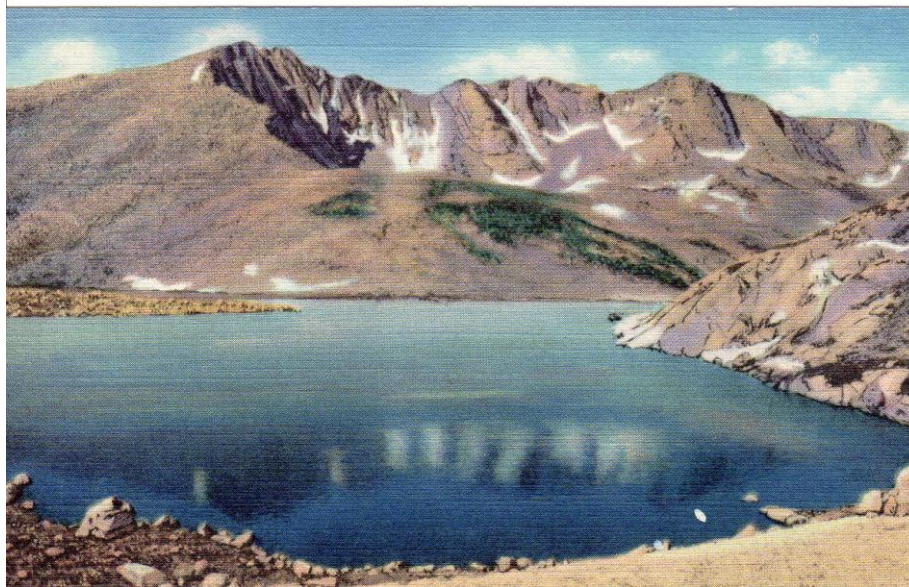


**Title Flatirons in Winter
Boulder, Colorado**

Sanborn Souvenir Co. 2023

Color

**Grand Lake Area Historical Society
Accession # 2017.32.09 - 109**

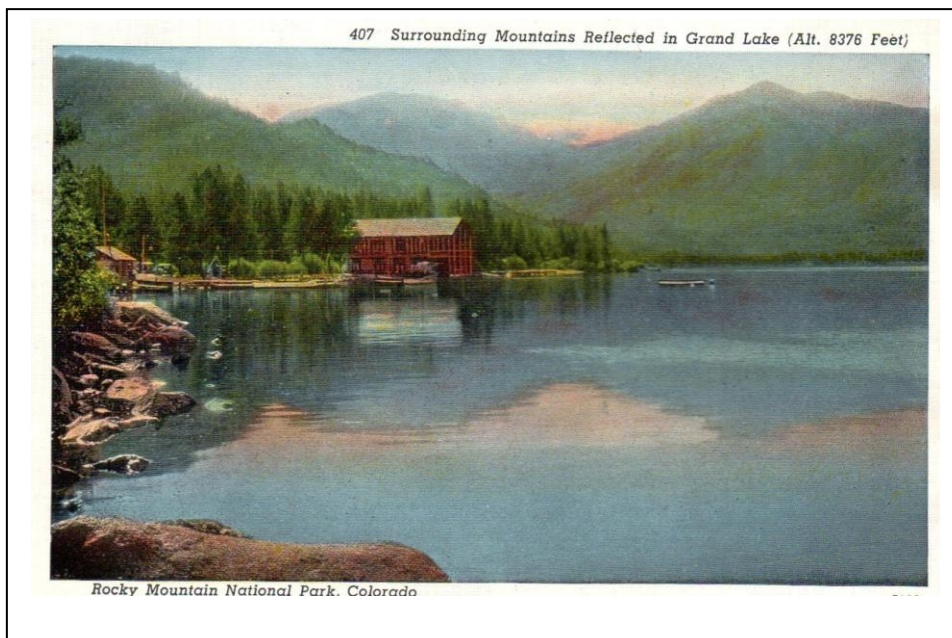


**Title Mt Evans, Elev. 14, 260 Ft.,
Reflected in Summit Lake**

Sanborn Souvenir Co C 329

Color

**Grand Lake Area Historical Society
Accession # 2018.06.01**



**Title: Surrounding Mountains Reflected in Grand Lake
(Alt. 8376 Feet) Rocky Mountain National Park**

Sanborn Souvenir Co. 407

**Color
Same as G 107 in black and white**

Two copies of the postcard

**Grand Lake Area Historical Society
Accession # 2017.32.09 - 2018.06.02**



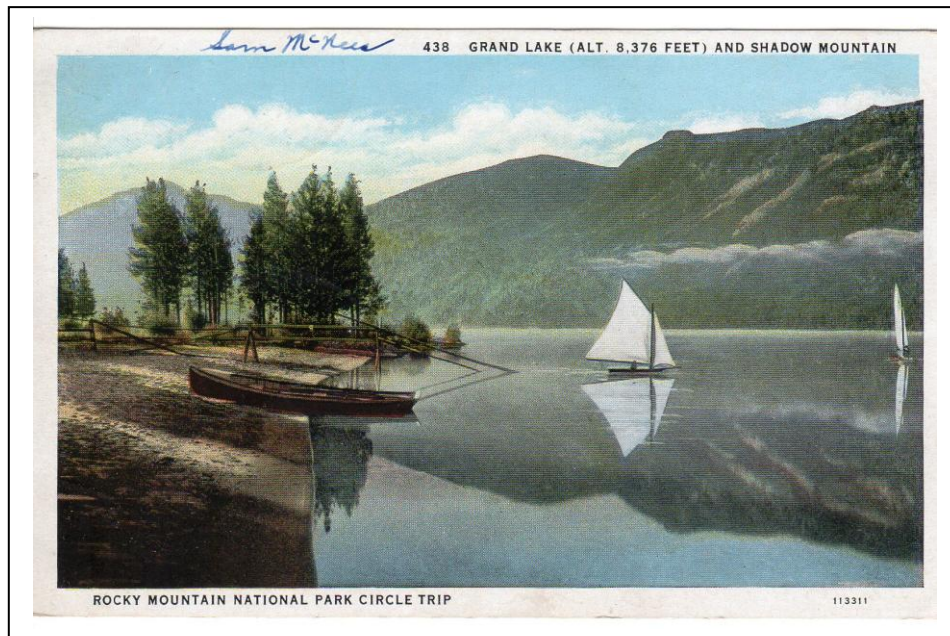
**Title Grand Lake and Mt. Craig. (Baldy)
Rocky Mountain National Park, Colorado**

Sanborn Souvenir Co 419

Color

**Two postcards alike
Penciled on one 1939**

**Grand Lake Area Historical Society
Accession # 2019.07.19; 2019.07.03**



Title Grand Lake (ALT. 8,376 feet)
And Shadow Mountain
Rocky Mountain National Park

Sanborn Souvenir Co 438

Color

Postmark September 6, 1930
One Cent Stamp

Grand Lake Area Historical Society
Accession # 2010.30.5



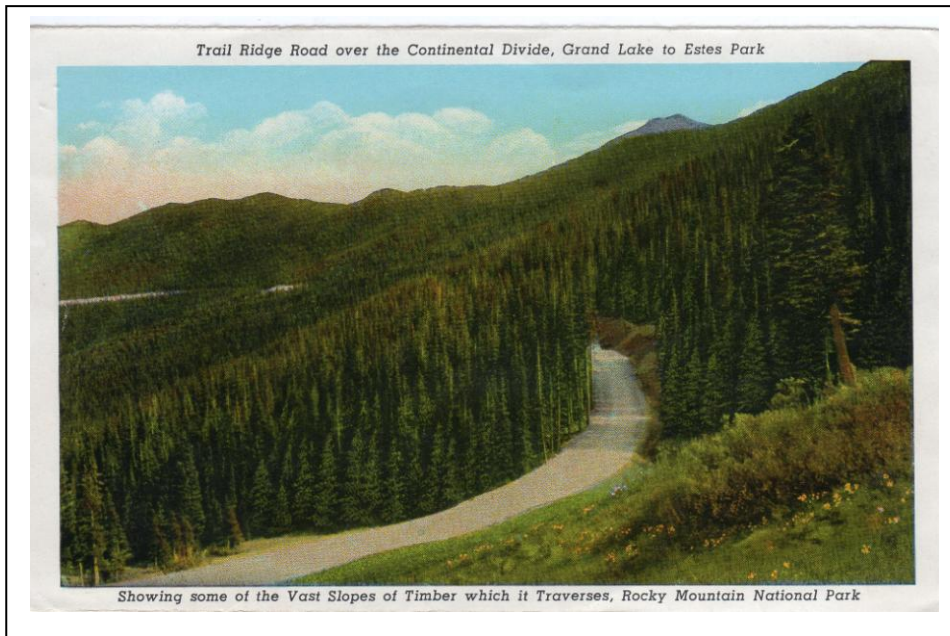
Title Yacht Race on Grand Lake,
Never Summer Range in Distance
Rocky Mountain National Park

Sanborn Souvenir Co. 460

Color

Penciled on back 1947
Three postcards alike and one photo

Grand Lake Area Historical Society
Accession # 2019.07.02; 2011.10.40; 2017.32.09 - 149



**Title Trail Ridge Road over the Continental Divide
Grand Lake to Estes Park**

Sanborn Souvenir Co

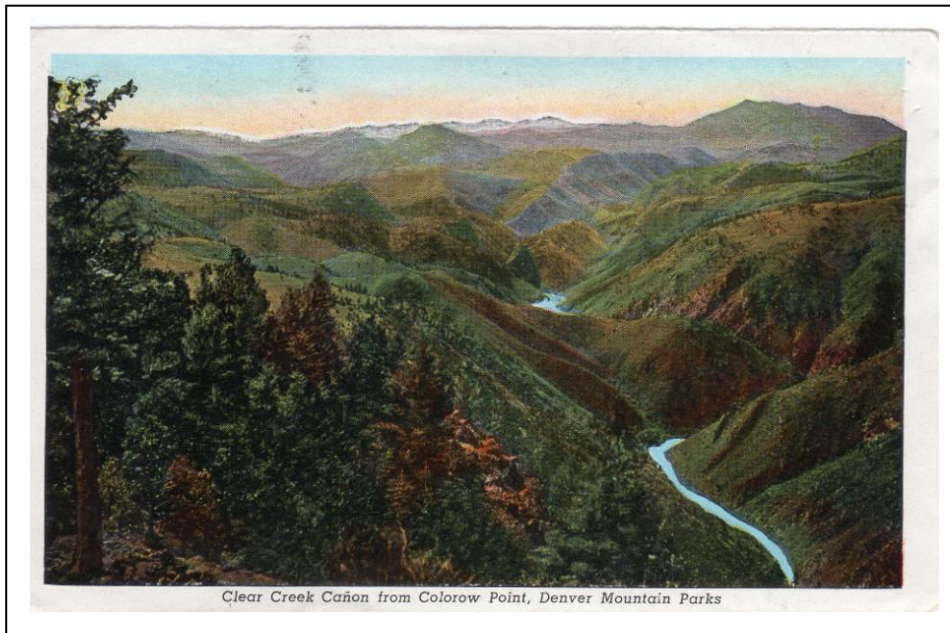
Color

Printed copy

May be from Colorado Mountain Parks Book

Grand Lake Area Historical Society

Accession # 2019.02.25



**Title Clear Creek Canon from Colorow Point
Denver Mountain Parks**

Sanborn Souvennir Co

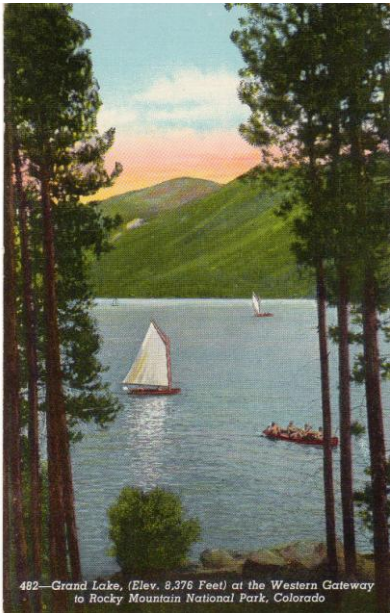
Color

Printed copy

May be from Colorado Mountain Parks Book

Grand Lake Area Historical Society

Accession # 2019.07.24



Title Grand Lake, (Elev. 8,376 Feet)
At the Western Gateway to
Rocky Mountain National Park

Sanborn Souvenir Co 482

Color

Three copies alike

Postmark on one Grand Lake, Colo. Aug 24, 1944

Grand Lake Area Historical Society

Accession # 2019.07.04 a & b; 2017.32.09 - 89



Title Yachts and Yacht Club at Grand Lake, Colorado
Mt. Craig (Baldy) in the distance

Sanborn Souvenir Co 3412

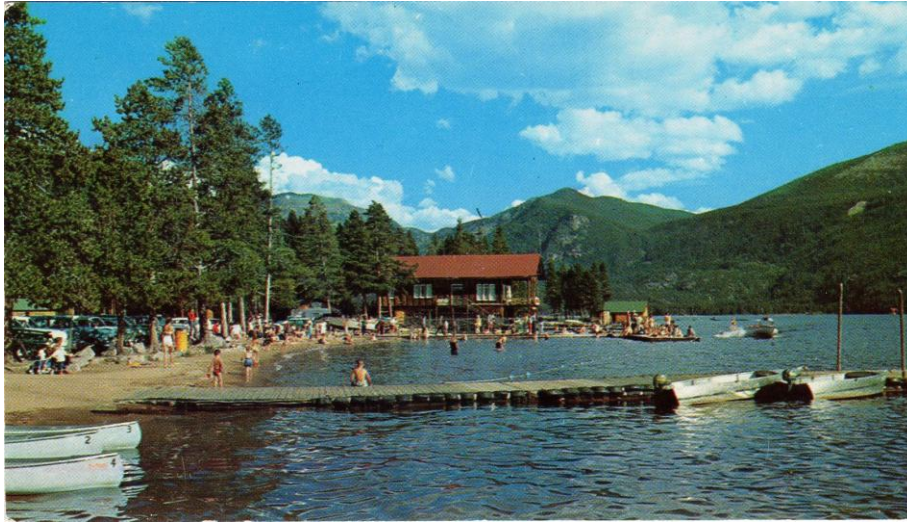
Pub. by Dexter Press

Color

Card has been cut on edges

Grand Lake Area Historical Society

Accession # 2019.07.22



Title Yacht Club and Town dock in Grand Lake, Colo

Sanborn Souvenir Co (number cut off)

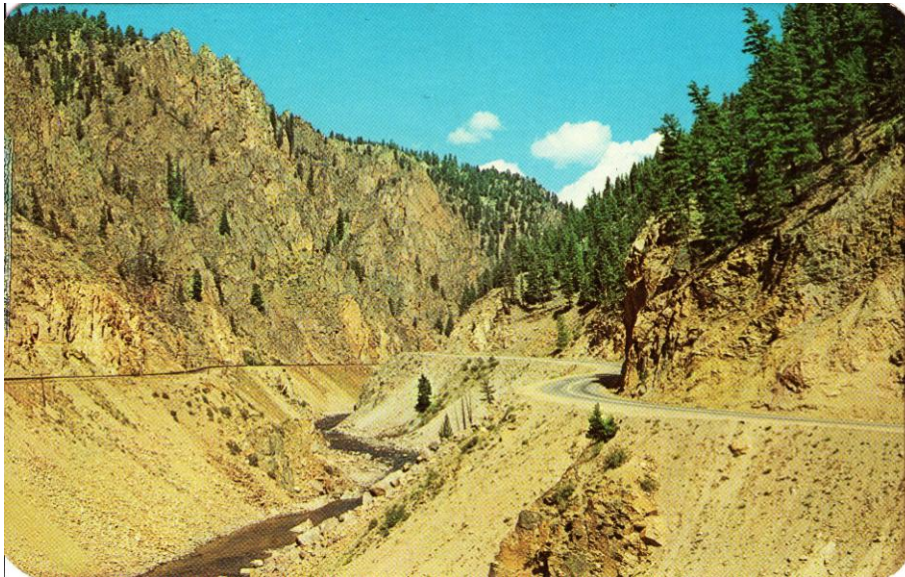
Pub by Dexter Press

Color

Edges cut to fit in scrapbook

Grand Lake Area Historical Society

Accession # 2019.07.23



**Title Byers Canon on Hwy. U.S. 40
Between Hot Sulphur Springs and Kremmling, CO.**

Sanborn Souvenir Co. #3850

Pub. by Dexter Press

Color

Grand Lake Area Historical Society

Accession # 2019.07.16



Title Canadian Jay

Sanborn Souvenir Co. #3787

Color

**Grand Lake Area Historical Society
Accession # 2019.07.13**

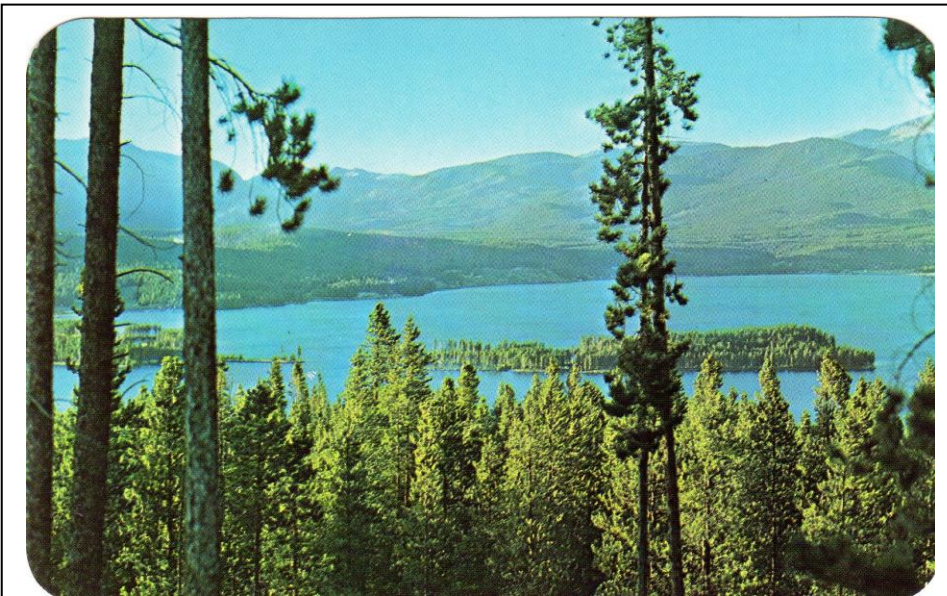


Title Mountain Columbines

Sanborn Souvenir Co. #3766

Color

**Grand Lake Area Historical Society
Accession # 2019.07.09**



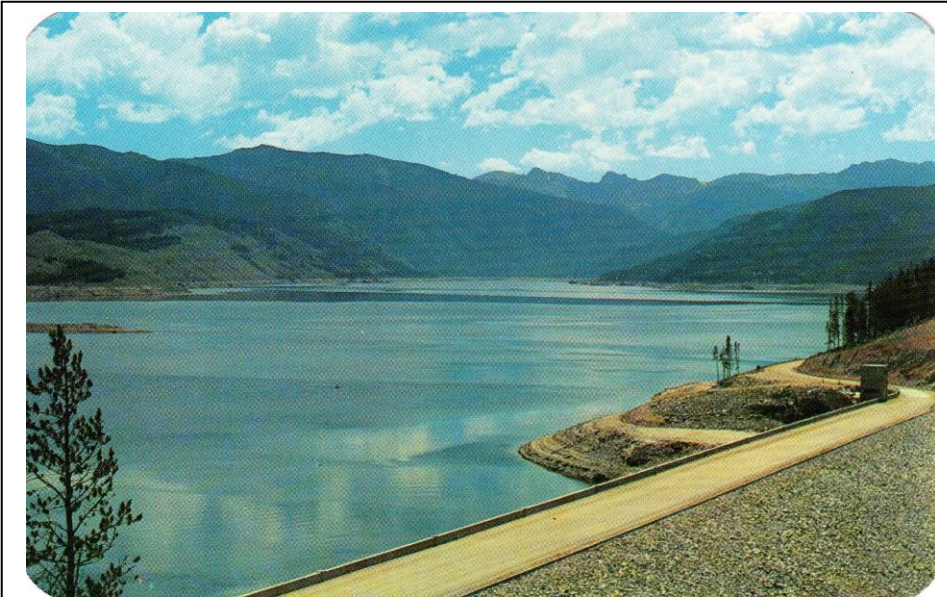
Title Shadow Mountain Reservoir

Sanborn Souvenir Co. #3446

Color

Grand Lake Area Historical Society

Accession # 2017.32.09 - 86



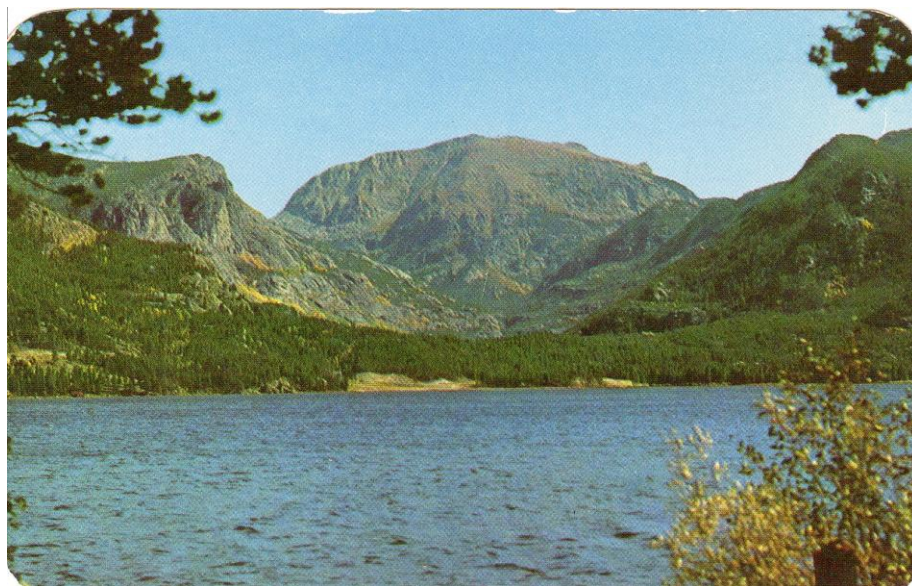
**Title Granby Dam and Reservoir in Middle Park,
Colorado**

Sanborn Souvenir Co. #3415

Color

Grand Lake Area Historical Society

Accession # 2017.32.09 - 105

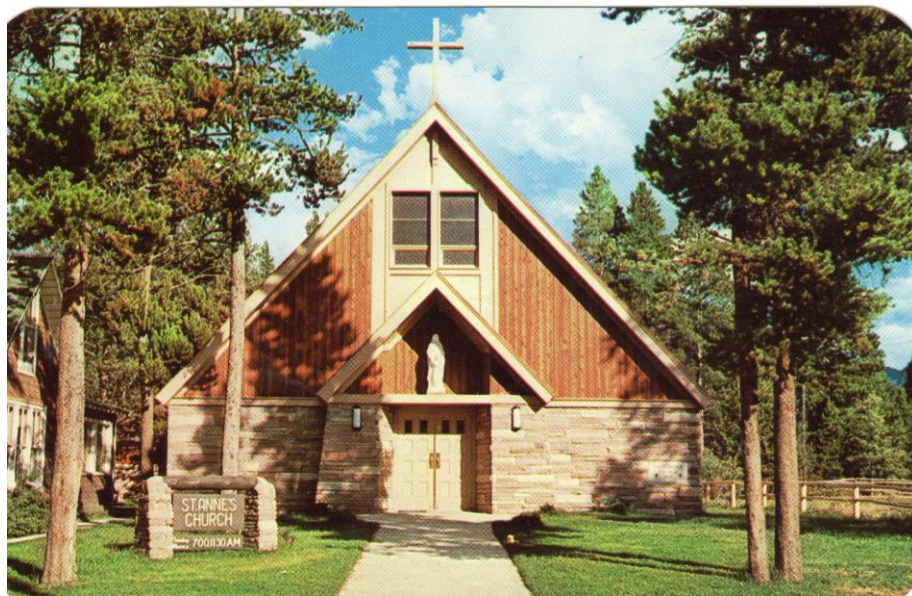


Title Grand Lake with Mount Baldy (Craig)
in the background

Sanborn Souvenir Co. 3402

Color

Grand Lake Area Historical Society
Accession # 2019.07.18



Title St. Anne's Catholic Church, Grand Lake, Colo

Sanborn Souvenir Co. #3377

Color

Two postcards alike

Grand Lake Area Historical Society
Accession # 2019.07.08; 2018.53.06



Title The Street at Grand Lake, Colorado

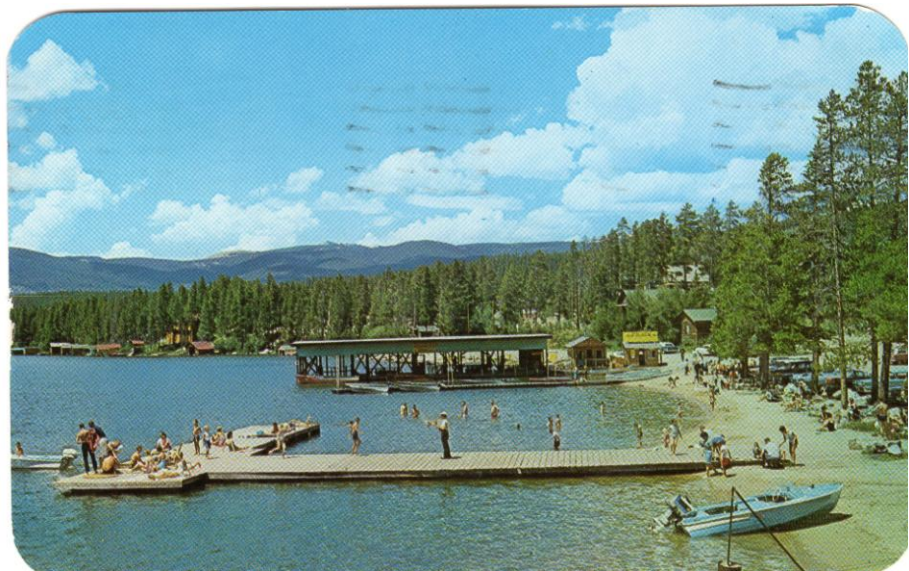
Sanborn Souvenir Co. #3372

Color

Dated on the back as 1956

Grand Lake Area Historical Society

Accession # 2018.29.09e



Title Vista of beach and boat dock at Grand Lake, Colo.

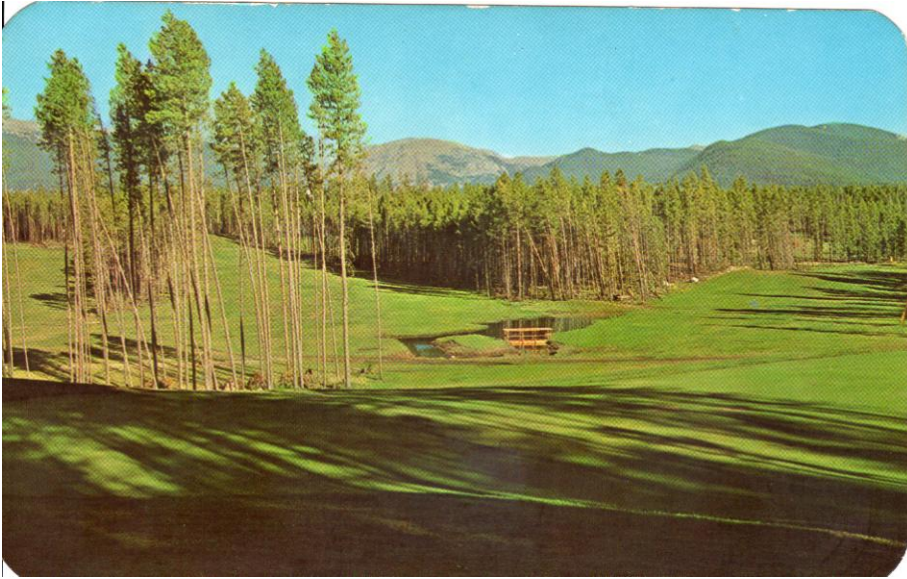
Sanborn Souvenir Co. #3365

Color

Postmark Grand Lake, Colo Aug 21, 1963

Grand Lake Area Historical Society

Accession # 2017.32.160

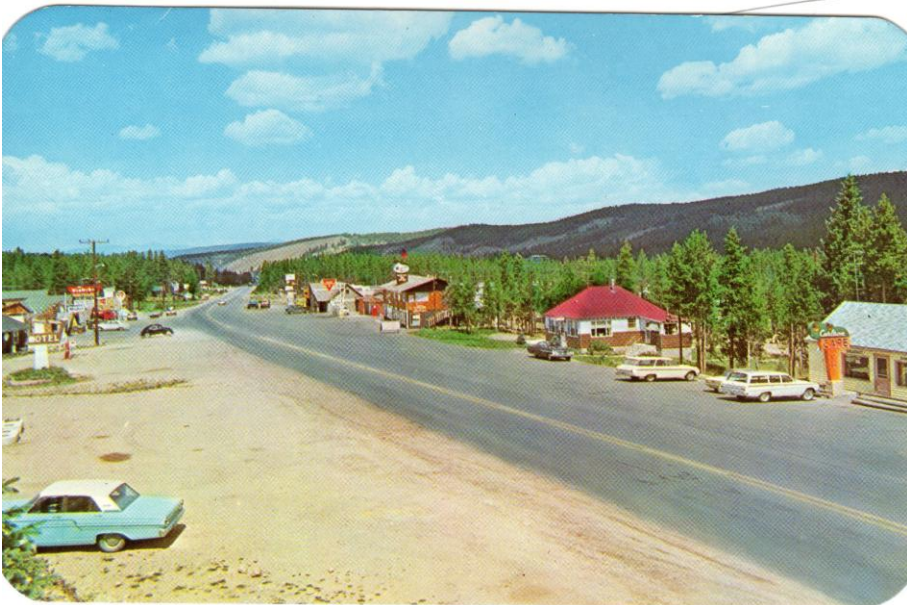


Title Vista of Neversummer Golf Course,
With Mt. Baldy in background.
Grand Lake, Colorado

Sanborn Souvenir Co. #3356

Color

**Grand Lake Area Historical Society
Accession # 2019.07.11**

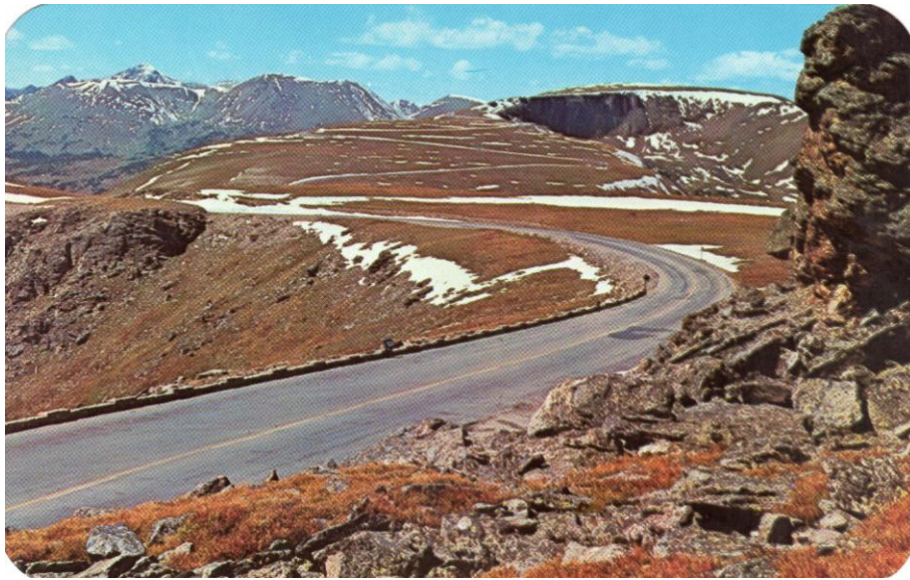


Title Vista of Hideaway Park, Colorado, on Highway 40
At the foot of Berthoud Pass

Sanborn Souvenir Co. #3348

Color

**Grand Lake Area Historical Society
Accession # 2019.07.07**



Title Tundra Curves on the Trail Ridge Road.

Sanborn Souvenir Co. #3331

Color

**Grand Lake Area Historical Society
Accession # 2019.07.15**



Title Bathing Beach and boat landing at Grand Lake

Sanborn Souvenir Co. #3302

Color

Two postcards alike

**Grand Lake Area Historical Society
Accession # 2017.32.09 - 158; 2017.32.09 - 159**

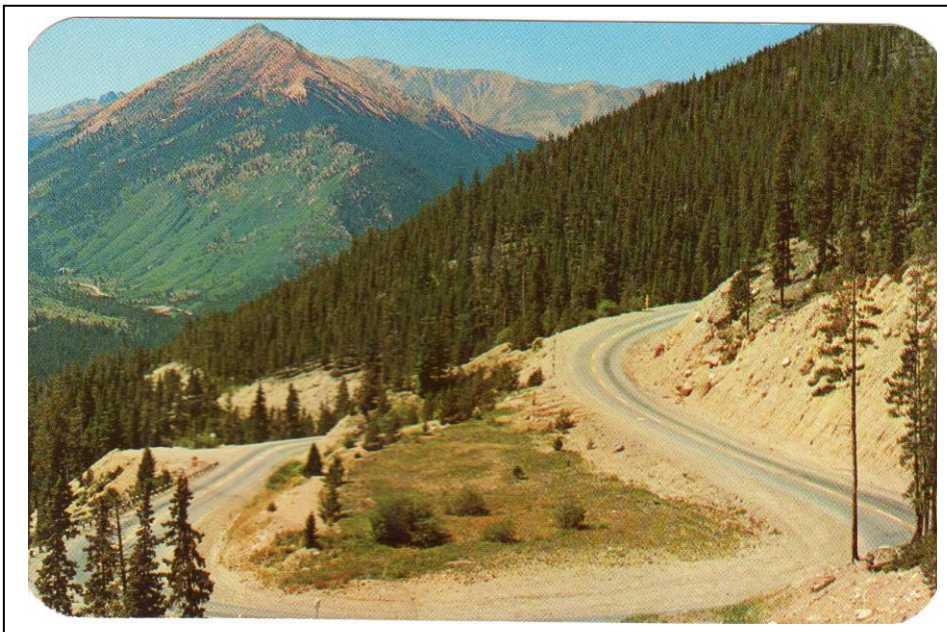


Title Welcome to Colorful Colorado

Sanborn Souvenir Co. #3172

Color

**Grand Lake Area Historical Society
Accession # 2019.07.17**

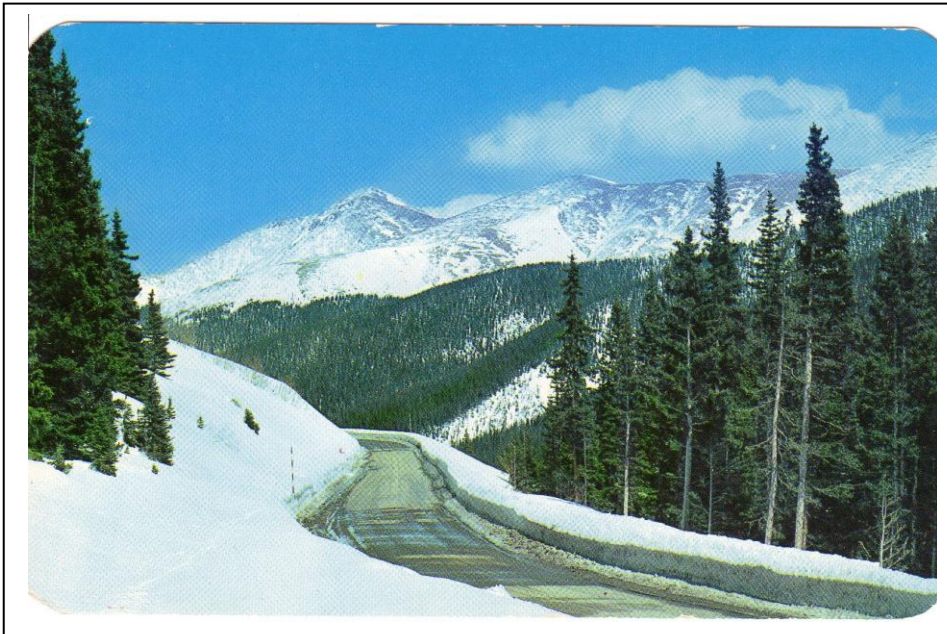


Title Hairpin turn on Berthoud Pass

Sanborn Souvenir Co. #3116

Color

**Grand Lake Area Historical Society
Accession # 2019.07.05**



Title Winter vista on Berthoud Pass

Sanborn Souvenir Co. No. 3013

Color

Written on back 1954

Grand Lake Area Historical Society

Accession # 2019.07.20



Title Lakeview Motel, Grand Lake, Colorado

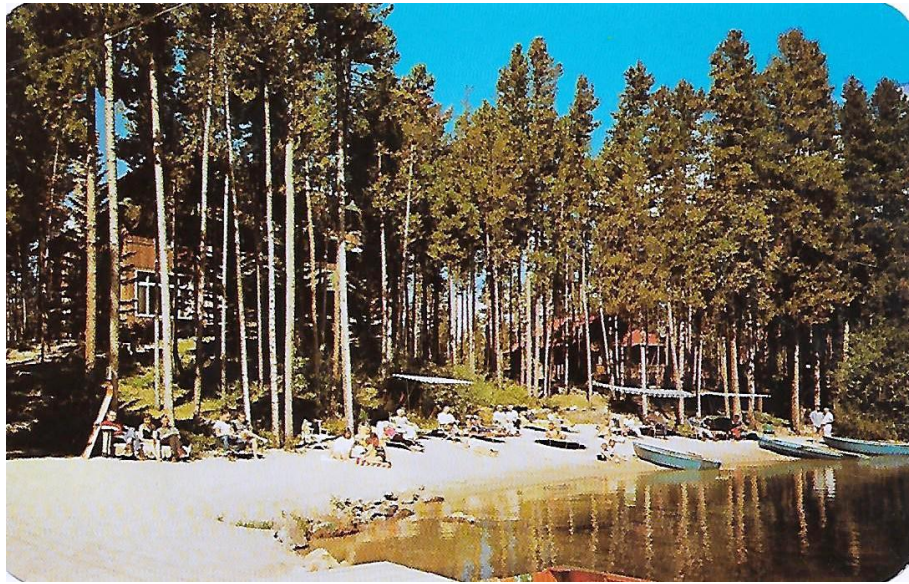
Sanborn Souvenir Co. 34281-B

Color

Two postcards alike

Grand Lake Area Historical Society

Accession # 2018.53.05



Title Daven Haven Lodges

Sanborn Souvenir Co. 8640B

Color

Grand Lake Area Historical Society

Accession # 2017.32.09 97



Title Main Dining Room at Daven Haven Lodges

Sanborn Souvenir Co. 8639B

Color

Note says the 1960s

Grand Lake Area Historical Society

Accession # 2017.32.09 - 133



Title A magnificent animal – the Bull Elk

Sanborn Souvenir Co. G-218
Commerce City, CO
Made in Italy

Color

Grand Lake Area Historical Society
Accession # 2018.29.09 b

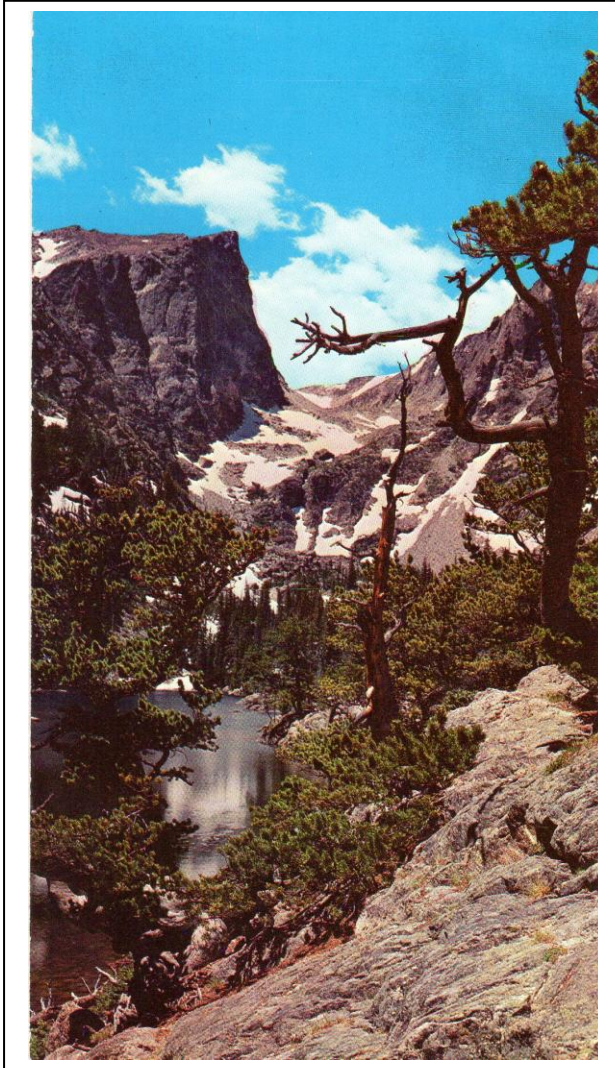


Title Aerial View of Grand Lake and Grand Lake, Colo.

Sanborn Souvenir Co. 10 R 132 65638-C

Color

Grand Lake Area Historical Society
Accession # 2017.32.09 - 129



Title Dream Lake and Hallett's Peak

**Sanborn Souvenir Co. ED #5
Notecard**

Color

**Grand Lake Area Historical Society
Accession # 2009.192.28**