

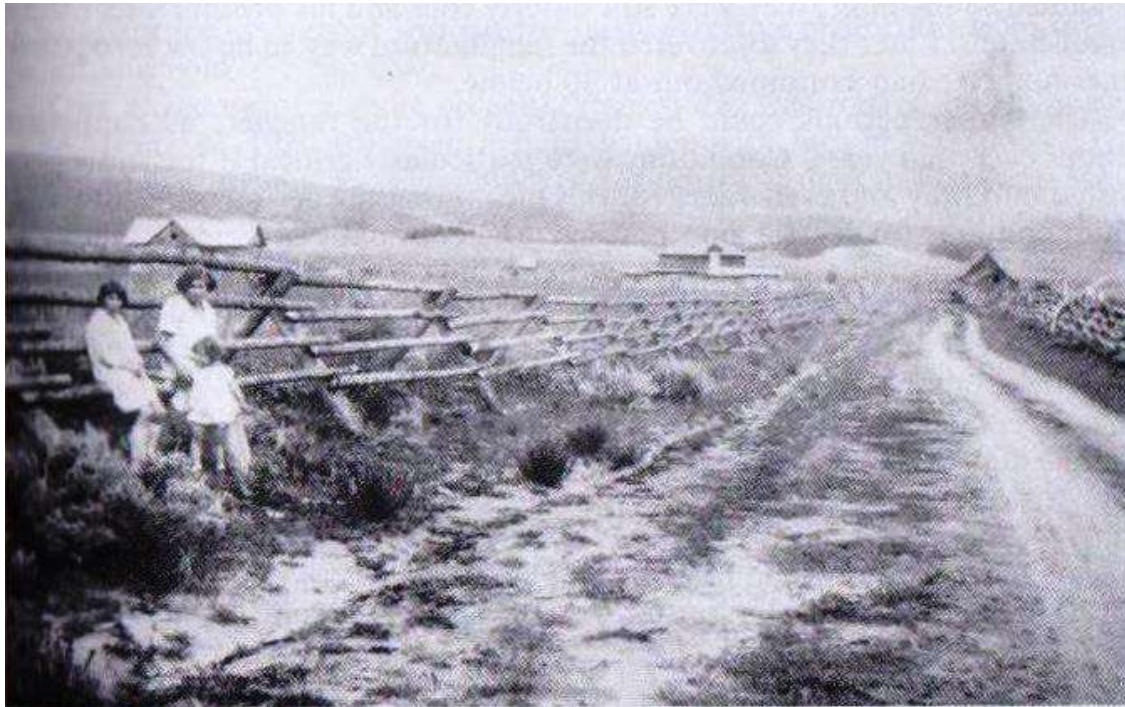
## STILLWATER RANCH

### Owners:

John G. Holzwarth, Sr. - homesteaded  
Tom and Susan Johnston family - 1898  
Amos Horn - 1929  
Ranch moved to Hwy 40/34 @ 1938-39  
Under Granby Reservoir –mid 1940s

### Location:

On Stillwater Creek, most of the ranch and the site of all the buildings, including the post office, now under Lake Granby, out from the foot of the present Stillwater Campground boat ramp.



*Buck fences line the road on the Stillwater Ranch, Grand Lake.*

**General Ranch Information:**

\* "Never a real dude ranch, was definitely a stage stop and guest lodge."

\* "Johnstons at first lived in the Holzwarth claim shack in the willows by the creek. Tom drove the stage and carried the mail from Coulter to Grand Lake and Susan fed and cared for the people who rode the stage line."

\* "Tom and Susan wanted to build a big log house to keep guests. According to Azalea Carr, the easiest way to build was to buy a sawmill, so Tom and George Carr bought a water-powered mill from George Bunte. In 1901, they sawed enough wood for their respective houses, with some left over to sell." Johnston house completed in 1902. Called the "Johnston Hotel" as they took in guests.

\* "In later years the Post Office was moved from King's to Stillwater, home of the Tom Johnstons, where it was named 'Stillwater'." Other Johnstons listing Stillwater as their home: (1914) Robert E. Johnston, (1915) James Johnsto. Also (1914) Henry Smith, Al Sample (See Slash J Slash Ranch.)

\* Amos Horn raised cattle and hay. With CO-BT, the ranch was moved to Hwy 40/34

\* Lloyd Palmer (son Wes) now lives on the other side of Parshall. He lived on Stillwater Ranch at one time, and remembers the lodge (Johnston Hotel?).

\* Ida Lupino starred in a movie filmed in part on Stillwater Ranch: *On Dangerous Ground*, 1952.



**Susan Johnston**

**Files:**

Stillwater Ranch  
Johnston

**Pictures:**

Ranch fence  
Ranch scenes  
Johnstons

