

SELAK RANCHES

Owners:

1880s?

Location: Fred Selak was a descendant of early settlers in Grand County. He built a cabin three miles south of Grand Lake where he lived alone. He helped his brother Ed in various enterprises including mining, a general store and a sawmill. Red and Helene Fisher lived in Fred Selak's cabin between the two meadows while their house was being built below the present Shadow Mountain Dam. (See Fisherancho.) Ed Selak's ranch was farther south with several buildings.

Fred Selak's Ranch, first sold to Redwood Fisher family, now part of RMNP: big meadows, across the river past Shadow Mountain Dam. (In 1972, Mary Lyons Cairns offered to show Idelia Riggs where it was.) The road from Grand Lake to Pole Creek Ranger Station went through the property. The Ranger Station is straight east and a little south of Shadow Mountain Dam. The meadow there is called Ranger Meadow, and Ranger Creek runs through, but Jackie Boyd remembers it as Selak Meadows.

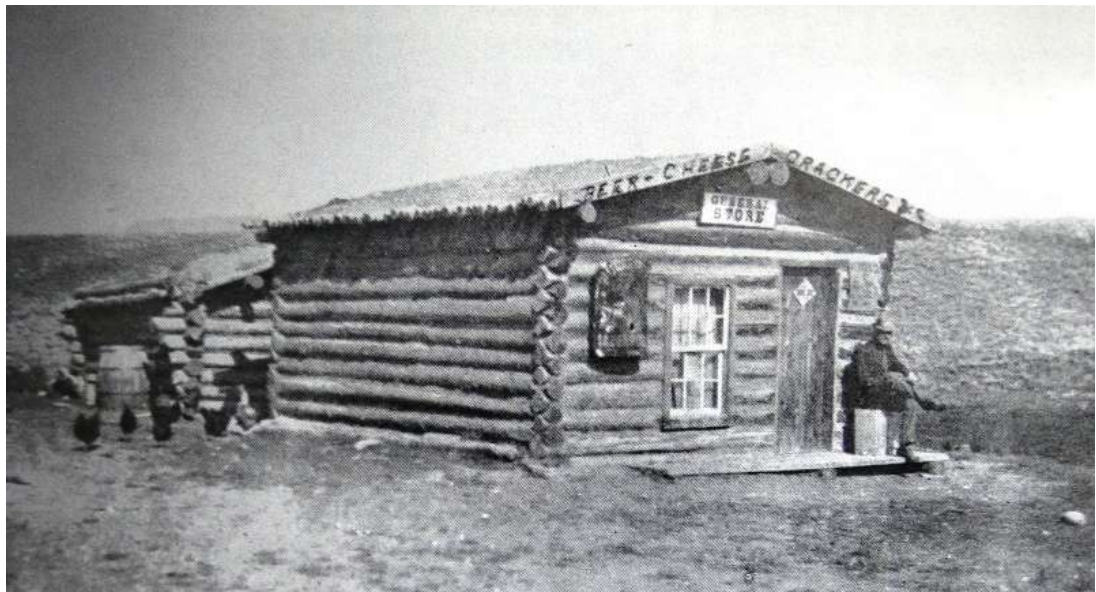
Ed Selak's Ranch was closer to Hwy. 34, where Tasha and John Miller's ranch is, across from the shortcut road to the high school. Also described as "across from the old garage on the alternate road to Granby." "In the early days there was no road where the present road from Granby leads past Ed Selak's ranch and on to Grand Lake." 1972

General Ranch Information:

* Charles G. Fisher and wife Sarah purchased 160 acres from Fred Selak estate on east side of Colorado River for \$10/acre and built a summer home in 1920s. Red and Helene Fisher lived in Fred Selak's cabin between the two meadows while their house was being built below the present Shadow Mountain Dam. (See Fisherancho.)

* Mrs. Selak was killed by a car when picking up mail and car going 100 mph – from Jon Ogden

* Martha Bohner's grandmother would pick wild strawberries in the meadows. Martha remembers that the grass grew high, and her Uncle Doug got lost in it. Martha's grandparents and their three oldest children lived there when they first came to the area.





Pole Creek Ranger Station



Old log buildings of Selak