

CARR RANCH



Owners:

George Carr - 1896

Harry W. and Azalea Carr - at least by 1915

Location:

Partly under Shadow Mountain Reservoir, and Present Pine Beach Subdivision



Mr. and Mrs. George Carr
Ethel and Harry

Ethel and Harry



Ethel Curry Higgins and daughter Marion



Harry & Azalea Carr and son George

General Ranch Information:

* Nancy Guthrie Baird, from Quebec, Canada was the great grandmother of Patience Kemp, and great great grandmother of Marion (Curry) Higgins (daughter of Ethel Carr), cousin of George Carr (son of Harry and Azalea Carr) and daughter of Ethel Carr Curry.

"Tom and Susan wanted to build a big log house to keep guests. According to Azalea Carr, the easiest way to build was to buy a sawmill, so Tom and George Carr bought a water-powered mill from George Bunte. In 1901, they sawed enough wood for their respective houses, with some left over to sell."



Files:

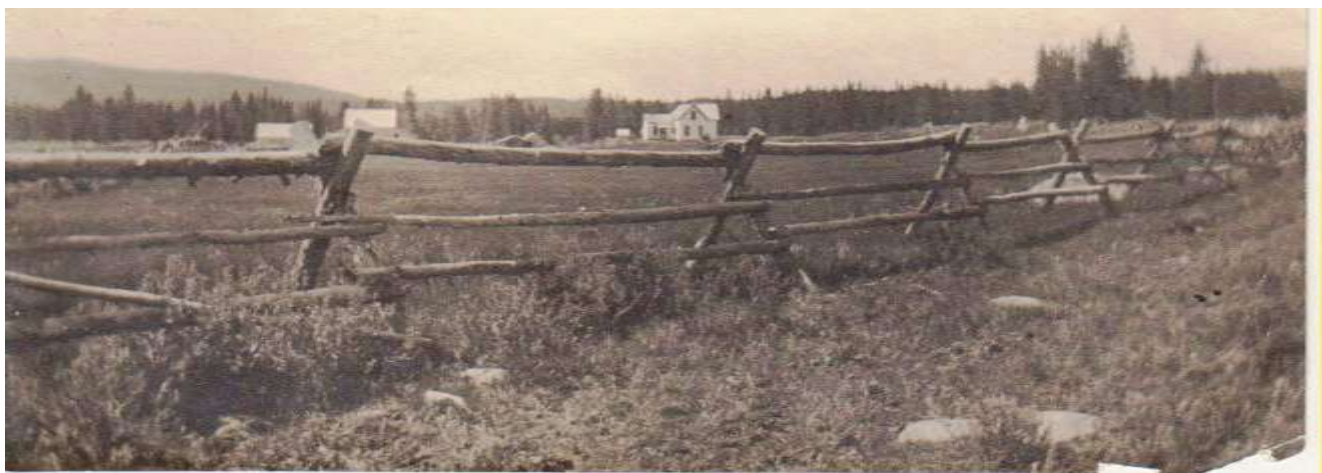
Carr

Pictures:

Ranch

Pictures of family

Nancy Guthrie Baird



* Azalea and Harry Carr owned a fox ranch; they released the foxes when they quit the business and it was purchased by the Colorado Big Thompson project.

